

TWO WHEEL DRIVE

A proposal for the provision of a new recreational facility, suitable for a wide age-range of villagers, was put before the Parish Council at a recent meeting. The proposal is to provide a pump track, possibly built around or using part of the existing skate park.

In recent years, pump track sport has become established as an extension of traditional BMX cycling, where, rather than pedal to generate speed, riders 'pump' their machines over undulating ground to create the energy to complete a circuit. Typically, the tracks consist of a continuous loop of rollers (bumps) and banked turns (berms), and are suitable for all wheeled sports, bikes, scooters and skateboards, and for all ages and abilities. The aim would be to create a healthy and social focal point for the village.

Parish Council members were very interested in the proposal, and asked for more information and an assessment of the need from the community. It was also agreed to see what funding may be available for the project.

A Facebook poll on the Husbands Bosworth pages revealed that there is a very healthy interest in creating a pump track in some shape for the village. (Note: Over 140 respondents supported the idea.)



THANK YOU...

As we enter our 30th year of keeping the community up to speed with local matters, the *Bosworth Bugle* Team would like to take this opportunity to thank our contributors, sponsors, donors, and especially our advertisers, for your continuing support.

In the 'new' digital age that has emerged since we first put finger to word-processor in 1996, it is gratifying to hear that our readers are still happy to receive the local news in the printed form...

The *Bugle* reaches the whole village and promises not to phish, scam or cold-call. We simply endeavour to present the facts in an impartial, and (mainly), accurate manner. We are keen that the *Bugle* remains dynamic, and are always looking for new ideas to keep the content 'fresh' and relevant. So, if there is something that you would like to see included or changed, or if you would like to contribute from yourself or your group please let us know!

WASTE CONTROL

Leicestershire County Council controlled Lutterworth Waste site will be closed for five weeks from Monday, February 23rd to allow repairs to the concrete base in the bottom yard, to ensure the site remains safe to operate for the future. Residents are encouraged to plan ahead and use alternative local sites during these periods.

Harborough Riverside site

Monday - Wednesday: Closed

Thursday - Saturday: 9.00am - 4.00pm

Sunday: Closed

Kibworth A6 site

Monday - Wednesday: 9.00am - 4.00pm

Thursday - Saturday: Closed

Sunday: 9.00am - 4.00pm

Residents are reminded that Harborough District Council operates a bulky waste kerbside domestic collection service. Up to three large items or 12 securely bagged loose items can be collected directly from your home. Call 01858 828282 and ask for Waste Services. The cost of this service is £48.36, pre-paid.

Items that can be collected are as follows:

Furniture & domestic appliances (fridges and freezers must be empty)

Beds, bedding & mattresses

General household waste (no green waste, rubble or builder's waste)

Children's toys & small outdoor play equipment

(Go to; harborough.gov.uk/waste for a full list)



QUIZZICAL LOOKS

And the winners are...

A very big thank you to everyone who entered our Festive Quiz. Our entrants once again proved themselves to be as devious as our compiler in a very close run competition...

The overall winner, with an unbeatable entry, was Amanda Parker who was very closely followed by Mike and Beryl Pennington and Caroline Burford and Liz McKenzie.

The answers will appear on-line at: www.husbandsbosworth.info shortly, and our sumptuous prizes will be available early in February.

We hope to return with more posers next Christmas!

BUGLE POSTBAG

A call-out to the wonderful team of volunteers who organise the monthly Causeway Charity coffee mornings, and keep the group ticking over! Heather, Jackie and Bill, Val, Frances and Helen - without your support, organisation and of course, baking skills, the group could not carry on.. Many thanks!

PUBLIC NOTICE

NOTICE OF APPLICATION FOR A PREMISES LICENCE CLUB PREMISES CERTIFICATE

Name of applicants:

Husbands Bosworth Parish Council & North Kilworth Football Club

Details of Application:

- Application for an Alcohol Licence for the Sports Pavilion
- Application Type: New Premises Licence
- Premises Details: Husbands Bosworth Millennium Pavilion, Kilworth Road, Husbands Bosworth, LE17 6JW
- Proposed Activities: Sell alcohol and late-night refreshments for booked events and regulated entertainment. No Alcohol shall be stored on site
- Proposed Hours: Standard UK licencing hours of Sunday - Monday 10am - 11pm, but primarily (*not limited to*) Saturdays and Sundays 10am - 6pm.
- Contact Details: licencing@harborough.gov.uk
- Representations must be made to the Licensing Authority in writing
- During office hours arrangements may be made for the register to be viewed at the Customer Services Department, Harborough District Council, Adam and Eve Street, Market Harborough, LE16 7AG

Any representation relating to this application must be made in writing to the Licensing Authority by 20th February 2026

It is an offence knowingly or recklessly to make a false statement in connection with an application. The maximum fine on summary conviction for this offence is £5,000.

POLICE FILE



To contact your Dedicated Neighbourhood Team (DNT) online, use the quick and simple online contact tool - Search *Lutterworth Police*. You will be asked a few questions to make sure your query gets to the right place.

From Monday 2 February 2026, our Front Enquiry Office (FEO) hours are changing to provide clearer, consistent access across the county.

What is changing?

- Standardised opening hours aligned to community demand
- Speak to our Local Support Team Officers (LSTO) on a free video call via GoodSAM if your local desk is busy or closed

New opening times for Market Harborough FEO (from 2 Feb 2026):

- Monday to Friday: 09:00 - 17:00

Can't visit in person? Report crimes and get updates at: <https://www.leics.police.uk>

THE BUGLE TEAM

Editor:

Melvyn Forman

10 Church Lane

Tel: 880281

Email: m.forman@talk21.com

Treasurer & Advertising:

Ralph Horton

18 Highcroft

Tel: 880526

Contacts:

Mike & Sylvia Price

3 Highcroft

07718 052896

Jo Horton

18 Highcroft.

Tel: 880526

Frances Smith

10 Butt Lane

Tel: 880225

Penny Mattock

9 Fernie Court

Tel: 881140

Heather O'Connor

16 Fernie Court

Tel: 880165

Postal Subscription & distribution:

Melvyn Forman

Tel: 880281

Email: m.forman@talk21.com

www.husbandsbosworth.info

**COPY DEADLINE
15th OF THE MONTH
PRECEDING PUBLICATION**

POLICE FILE

Market Harborough & Lutterworth Police

Dedicated Neighbourhood Team

Insp. Liz Perry

Sgt. Charlie Davies

PC James Day

PC James Whittaker

PCSO Steve Adams

Market Harborough Police Station,
Fairfield Road,

Market Harborough 0116 222 2222

[harboroughandwigston.npa@leics.
police.uk](mailto:harboroughandwigston.npa@leics.police.uk)

CRIMESTOPPERS:

0800 555111

ACTION FRAUD:

www.actionfraud.police.uk

0300 123 2040

DONALD CAMPBELL LANDSCAPES

07817 381 244

Paving

Fencing

Groundwork

Pointing and re-laying

Brickwork & Stonework

Small maintenance work

Specialising in old paving

& stonework renovation

LABC Building Excellence AWARDS 2023 Regional Winner

LAMBERT & WRIGHT
BESPOKE PROPERTIES

Lambert & Wright are an award winning Property Renovation Team covering the Midlands. With over 30 years of experience we handle everything from plumbing and electrics to period restoration.

For a free consultation please call or email:-
07866 741261 (Jason)
info@lambertandwright.co.uk

BOSWORTH IN FOCUS

WILD ABOUT BOSWORTH

Zander

We recently came across a team of Canal & River Trust workers who, at first glance, looked to be dragging the canal with a net. On inquiring, we were told that they were electro-fishing - drawing a row of electrodes through the water and stunning any fish with a low dose of electricity. The stunned fish float to the surface where they are assessed by the team in the following boat. The main object of this particular exercise was to check for zander, an aggressive non-native fish, which predates on native fish. The 'chaser' boat collects the zander, leaving the native fish to recover in minutes, in the water.

Zander have made their home in our canals, and are officially classified as pests. Any that are caught by anglers must not be returned to the water. They were originally introduced into the UK in 1878 into lakes on the Woburn Abbey estate by the Duke of Bedford, (we've come across his 'introductions' before!), and soon after appeared in the nearby river Great Ouse. Particularly suited to slow moving, murky waters, they are now found in most lowland rivers and throughout the canal system.

Fortunately, our stretch of canal is a summit level, which would mean any invasion of zander would have to have been illegally introduced, or to have scaled Watford or Foxton lock flights. So, unsurprisingly the survey of our local canal found no zander.



QUARRY BUSINESS

At a recent Quarry Liaison meeting representatives of Husbands Bosworth Parish Council, Welford Action Group, LCC Environmental Services and LCC Planning met with representatives of the quarry management and the GRS Bagging teams.

The meeting received a report on mineral extraction, which was progressing eastwards into Phase 4, beyond Gravel Pit Spinney. Phases 2 and 3 had been worked out more quickly than anticipated, due to lower than expected yields and pocketed deposits. Restoration of the worked out phases was reported to be progressing well, with a series of good contracts servicing sites at the Gartree new prison, Fleckney and Leicester. A limited amount of material was being processed through the newly commissioned concrete batching plant, as it continued to seek local contracts.

GRS management reported that a large percentage of the throughput of their bagging plant was the processing of imported material. When challenged that their operation was as a depot and distribution point rather than a primary user of the quarry material, it was pointed out that 60% of the quarry's output left the site through the bagging plant.

Traffic issues were highlighted, and, although it was noted that Mick George lorries generally adhered to the 20mph request, concerns were raised about the speed of third party operators, in particular, Midland Rock. The meeting heard that roadside checks were being carried out regularly on Welford Road, lower Bell Lane and also in Welford, and one MR driver had been banned from the site.

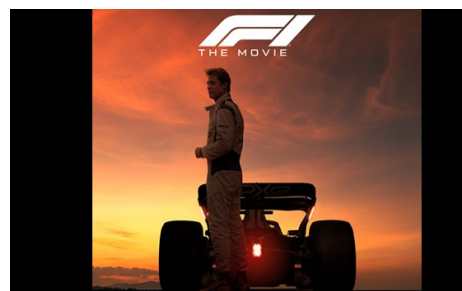
The problem of road fouling, especially on Welford Road, was discussed. It was noted that, once reported, remedial action was usually swiftly undertaken when the problems were seen, and that operations had even been stopped at times. However, it was requested that the situation be more closely monitored by the quarry management and that the site be closed earlier on problematic days. It was also requested that subsequent street cleaning be extended down Bell Lane, and out of the village, when necessary.

WELFORD MOVIE NIGHT

Our next film will be 'F1 The Movie', on Saturday 7th February, at Welford Village Hall. The storyline follows a washed-up driver (played by Brad Pitt), who is coaxed out of retirement to mentor a young hotshot and help a struggling team.

The film will start a little earlier than usual, at 7.00pm and will have an interval, when we will be handing out free choc ices!

The film will finish at around 9.45pm, when we will finish with our usual tea or coffee. To gauge numbers, it would help if you could email Chris: chrisbrown55@hotmail.co.uk



FLOWERS BY HEATHER

Husbands Bosworth



Flowers and floral arrangements for any occasion

Call for a free consultation.

Many years experience in the floral industry.

Follow or like me on

Facebook.

Call me on 07773 063063



ROBERT DARGUE
ARCHITECTURE & DESIGN

M- 07724 305551

T- 01858 881638

E- robertsarchitecture.design@gmail.com

www.robertsarchitecture.design

**Carpentry & Joinery
Design & Build
Interiors
General Building
& Maintenance**

SCHOOL REPORT

HUSBANDS BOSWORTH C. of E. PRIMARY SCHOOL Head of School Alison Vickers

It's been a busy and exciting start to 2026, with Creative Week bringing lots of creative flair, with a special focus on collage work.

Class 2 explored the work of children's book illustrator, Lauren Child, the recently crowned Children's Laureate, creating collage pictures of a robin in a winter scene.

Class 3 learned about the work of Spanish Cubist artist, Pablo Picasso, especially his portraits, using collage techniques to design their own Picasso-inspired faces.

Class 4 studied the work of the renowned collage artist, Elizabeth St Hilaire, and layered pieces of paper to create strikingly colourful backgrounds for striking silver birch trees.

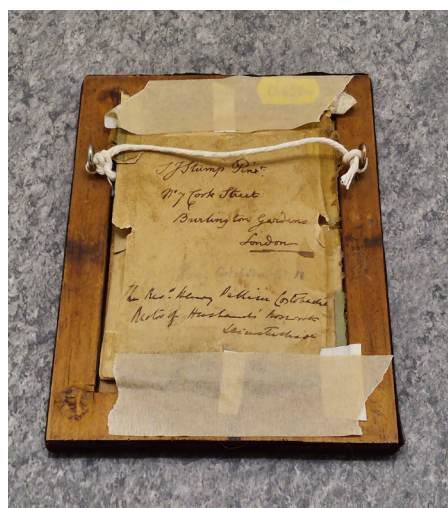
These vibrant creations have certainly brightened our walls and made everyone smile!



BYGONE BOSWORTH

Images from the Historical Society's Archive Collection

We regularly get queries relating to Bosworth historical matters - usually family history requests or places that folk have connections to. Recently, however, we had a request from a casual observer from Gloucestershire who had chanced on a small portrait in an auction that had a label relating to Husbands Bosworth on the back. (See images)



The enquirer had no interest in the picture but was intrigued to find out the name of the person noted on the label. It was clear to us that it related to Rev. Henry Palliser Costobadie, who had been the incumbent at All Saints church 1843 - 1856.

With this information, both ourselves and our enquirer then, as he puts it...descended down a rabbit hole, seeking further details. Doing a bit more digging, we surmised that he was a relative of Admiral Sir Hugh Palliser (1723-1796), a mentor to Captain Cook, who, in 1770 named a promontory in New Zealand after him, which now encompasses Palliser Bay. Intriguingly, digging even deeper we find that Rev. Henry Costobadie died at sea in Palliser Bay, NZ on April 17th 1856, aged 54 years.



At a time when few folk ventured further than the local market town, we find our rector on the other side of the world! Can he have been visiting his illustrious relative's bay?

As an adjunct to this piece, the brass chandeliers in the north and south transepts of All Saints Church were installed in the memory of Rev. Henry Costobadie and his wife, Louisa; the inscriptions thereon helpfully noting that Rev. Henry Palliser Costobadie died at sea, '...on the day of his landing in Wellington, New Zealand'.

Under the backing of the rather dashing portrait is what looks like, on closer inspection, a note: Henry Costobadie aged 18.

NEIL BURKE JOINERY

Supporting
the
Bosworth Bugle



'JJ's Kiddycare'



- * Nursery & Pre-school
- * GOOD * Ofsted grading
- * Government funded sessions available
- * 0-5yrs, Monday - Thursday, 51 weeks per year
- * Situated on a farm site between South Kilworth & Welford
- * Spaces available

Tel no. 01858 575642

www.jjs-kiddycare.co.uk

Email: admin@jjs-kiddycare.co.uk

MORE BOSWORTH IN FOCUS

ACTIVITY & INTEREST GROUPS

Art Group

Contact: Melvyn Forman 880281

All Saints Parish Church

Contact: Peter Bugge 437929

Causeway Charity

Contact: Heather O'Connor 880165

Craft Group

Contact: Gail Wilmot 880413

Badminton Club

Contact: Ralph Horton 880526

HB School

Contact: Office 880212

Historical Society

Contact: Melvyn Forman 880281

Millennium Woodland Trust

Contact: Jackie Fletcher 880910

Parish Council

Contact: Derek Watson 881109

Playing Field & Pavilion

Contact: Patricia Hobson 07712 630197

St. Mary's Roman Catholic Church

Contact: Matthew Pittam 01788 833547

Village Lunch

Contact: Jo Hutton 07534 057575

Village Hall

Bookings: Sue Fisher 880026

ART GROUP

Bosworth Art Group is a small, friendly and informal group of arty minded souls meeting on alternate Tuesday mornings, 10.30am to 12.30 in the Sports Pavilion, Kilworth Road. Meetings are on a pay-as-you-go basis, £2.50 per session to cover room hire and coffee. The group is self tutored and all mediums and skill levels are welcomed - new members are assured a warm welcome!. Interested? Why not come along and try a session...

Art Group dates for February are:

Tuesdays, 10th and 24th.

For details call Melvyn on 880281.

HISTORICAL SOCIETY

The Historical Society will be welcoming local historian, Judith Rout, to our February meeting. Judith is a keen recreational cyclist, and will be taking us along on a long-distance bike ride in aid of charity...

The 200 mile Queen Eleanor cycle route links the original locations of the Eleanor crosses, which Edward I erected in memory of his beloved wife, Eleanor, after her sudden death in 1290, near Lincoln.

In all, twelve crosses were erected, one at each place where her body rested on its journey from Lincolnshire to Charing Cross in London.

The annual Queen Eleanor charity ride, which follows the route that Eleanor's cortège took, raises money for The Connection, a charity aiming to end rough sleeping in London. Judith will be speaking about the ride, intertwined with notes on recreational cycling, homelessness and the life and times of Queen Eleanor,

The meeting is on Wednesday, February 4th, at 7.30pm in the Sports Pavilion, Kilworth Road.

For our March meeting, on March 4th our old friend, Dr. Len Holden will be bringing along a selection of short films from the Harborough Film Makers Archive Collection.

All our meetings are open to non-members and friends. A door charge of £3 is requested from non-members.

CRAFT GROUP

The Craft Group meets on the second Wednesday of each month in the Committee Room of the Village Hall, 7.00pm to 9.00pm. This is a friendly and informal gathering where craft-minded people can pick up new ideas and practise their craft in a relaxed atmosphere away from the distractions of home life.

For details contact Gail on 880413.

VILLAGE LUNCH

The next village lunch will be on Wednesday February 25th at the Kilworth Springs Golf Club South Kilworth Road, North Kilworth. We meet at 12.30pm to eat at 1.00pm.

The Village Lunch is a great place for those new to the area, retired or living alone to meet up with old friends, catch up with all the local gossip and make new friends whilst enjoying an excellent home cooked meal in a relaxed and friendly atmosphere.

The cost of the two-course meal including tea/coffee and mints is £13.50 per person. All dietary needs are catered for, please ask for details.

Please call Jo on 07534057575 if you would like to book a place, arrange transport to the venue, or for any other information.

Next month's Village Lunch date:

Thursday, March 26th

CAUSEWAY COFFEE

The Causeway Charity Group's Christmas meal was at the Gliding Club, before Christmas. As previously, the *Hungry Pilot* staff pulled out all the stops to provide traditional festive cheer, which was enjoyed and appreciated by all. Many thanks to the organisers!

The next Causeway Coffee morning will be on Friday, February 13th.

Causeway Coffee Mornings are held regularly on the second Friday of each month, 10.00am to 11.30am at the Sports Pavilion, Kilworth Road, and are a great opportunity for anyone in the parish who is retired and living alone to meet old friends and make new friends.

Come along and have a tea or coffee and a piece of cake with us, have a chat and browse our extensive jigsaw and book library - our coffee mornings are relaxed, friendly and informal.

If you know of anyone living locally who may be alone, vulnerable or needing support, please let the Causeway team know...

Contact: Heather 880165 or 07773 063063

F&W Plumbing & Heating Services Ltd

Based in North Kilworth

- ❑ Bespoke bathroom & kitchen design and installation
- ❑ All types of wall and floor tiling
- ❑ Hot and cold water systems
- ❑ Unvented hot water systems

Contact Jason on 07866741261

Email: jasonfandw@hotmail.com

www.fandwplumbingandheatingservices.co.uk

Over 30 years experience in designing and installing contemporary and traditional kitchens and bathrooms

Project manage personally with all associated trades for a co-ordinated high quality finish with minimum disruption

PAXFORD ELECTRICAL	Qualified to 18th Edition BS7671 & City & Guilds 2391 for Inspection & Test Part P Registered Reliable Professional Friendly	Electrical Services: <ul style="list-style-type: none"> • Installation Maintenance and electrical repair to home electrics • Consumer units, Fuse boards, & EICR's • Lighting repair or replacement, security lighting • Switches and sockets • Cooker and shower circuits • Pull cords, fans and timers • Nuisance tripping, fault finding and diagnosis Handyman services include, but not limited to <ul style="list-style-type: none"> • Carpentry, doors eased, locks replaced etc • Central Heating electricals • Showers and fans replaced • Plumbing and leak repairs • Data & CCTV 	PAXFORD ELECTRICAL
	Call John for a free quotation: 07866 761937 Or email paxfordjohn@gmail.com		

PARISH COUNCIL NEWS

Report of the Parish Council Meeting held on Tuesday, December 2nd 2025.

Present: Full Council and 2 members of the public

Visitors' Questions

The visitors were in attendance to contribute to specific agenda items.

HDC Community Grant Fund - Application Support

■ A Churchwarden from All Saints Church attended the meeting to inform Council and seek support for an application to HDC's Community Grant Fund for the installation of a new heating system in church. Council agreed to support the application

Cycle Pump Track

■ A parishioner gave a presentation relating to a proposal to seek funding for the provision of a cycle pump track in the village for recreational cycling, as an additional facility for youngsters. The parishioner agreed to collate evidence of community support and report back to Council

HBPC Community Fund Application

■ Council agreed to support Bosworth Tots parent and toddler group with funding to continue their activity and to enable the purchase of new equipment

Minutes

Minutes of the previous Ordinary Parish Council Meeting were approved and signed as correct

Matters arising (for report only)

■ Clerk notified Council that thanks had been received from the village groups that received donations from the PC funds

■ Clerk confirmed that the quarry operators will include Bell Lane in their vehicle safety monitoring programme

Finance

■ The monthly schedule of receipts and payments for November were received and confirmed as an accurate representation of the financial transactions undertaken by the Clerk on behalf of the Parish Council during November 2025.

Replacement Defibrillator on The Green

■ Clerk informed Council that the defibrillator is approximately 10 years old and the heater in the unit has failed. It was agreed to accept a quotation received for the replacement of the device

Millennium Pavilion & Playing Field

■ Frieze Project: it was agreed to print-up a full size proof of a frieze panel to assess the enlargement quality. Council agreed that the final image would be a 'word-cloud', for which each councillor and the children at the school would be invited to provide words or phrases, relating to 'Future Bosworth' that could be incorporated

■ Garage Project: Council agreed to have a site meeting to discuss building size and siting with the groundwork contractor

Millennium Wood Trust

■ Council heard that the transfer of ownership was progressing slowly but positively

■ Clerk confirmed that the S106 Greenways Grant application for works at the Millennium Wood had been accepted by HDC

Neighbourhood Plan Review (NPR)

■ Council considered details of the recent meeting with NPR consultants, the results of the Questionnaire and receipt of an initial draft for review. It was agreed to host a public meeting, early in the new year, as part of the statutory consultation process

High Street Planters

■ It was agreed to decorate the High Street Planters for the festive season. Council discussed ways to improve the visual impact of the planters, particularly in the High Street, through seasons. Cllr. Peel agreed to look at options for suitable seasonal planting

Any Other Business

■ Cllr. Hobson advised she had looked at criteria for submitting an application to the Police & Crime Commissioner Grant Fund to support the funding of a replacement speed indicator device (SID) for the village. It was agreed to progress an application

Date and time of next meeting

There will be an Ordinary Parish Council Meeting on Tuesday 3rd February 2026 at 7.30pm in the Millennium Pavilion

A full copy of the Minutes can be viewed or downloaded at: www.husbandsbosworthpc.org.uk or by request to the Parish Clerk.

LOCAL OFFICERS

Husbands Bosworth Parish Council: Councillors

Patricia Hobson (Chair)

07712 630197

James Bolter

Melvyn Forman

Gareth Peel

Kay Gallagher

Thomas East

Parish Clerk

Derek Watson

2a Mowsley Road

H.B. LE17 6LR

01858 881109

clerk@husbandsbosworthpc.org.uk

Member of Parliament

Alberto Costa 01455 283594

office@albertocosta.org.uk



Sherpa
Family Wealth

Financial planning for
you and your family

Jack Silk
Director & Chartered financial planner
Based in Husbands Bosworth
Jack@Sherpafamilywealth.co.uk
07961 154 660

Sherpa Family Wealth Ltd is an appointed representative of Sense Network Limited which is authorised and regulated by the Financial Conduct Authority.



INMAN HALL BUILDING & PLASTERING
FINE BUILDING AND PLASTERING SERVICES

- RENOVATION
- EXTENSIONS
- EMERGENCY REPAIRS
- BUILDING MAINTENANCE
- ROOFING
- PLASTERING

CALL GRAY INMAN-HALL : 07938217578
OR EMAIL : INMAN-HALLBUILDING@HOTMAIL.COM

CHURCH NEWS

All Saints Parish Church & St. Mary's Roman Catholic Church

ALL SAINTS CHURCH NEWS

There was plenty going on at All Saints over the Christmas period starting with the Christmas Tree Festival which raised just over £2000 for church funds. Our thanks to our sponsors for very generous raffle prizes and to all those whose hard work made it happen!

The evening candlelight Carol Service before Christmas was well attended, as was the school Christmas service. St. Mary's invited a reader from All Saints at their Nine Lessons and Carols service, Fr. Matthew having read one of the lessons for us the week before!

The regular Wednesday morning service fell on Christmas Eve, so was held in the Nave rather than the North Aisle, and our benefice's festive events concluded on Christmas Day, with a morning service at Mowsley.

Easter is almost upon us, with Ash Wednesday, which is the beginning of Lent, on 18th February. We are pleased that Rev. Chris Oxley and Rev. Paula Oxley, who live in the village and conduct many of our services, have offered to lead a weekly Lent Group throughout Lent. The focus of the group will be either devotional or study. Dates and times will be decided nearer the time but if interested do contact Chris and Paula at: oxleycr@btinternet.com

On a more down-to-earth note, a recent PCC meeting saw us scratching our heads over the need to replace the church boiler, which is on its last legs (*See below*).

The best modern systems are much more than we can afford, but compromises may not be good value in the long run.

Peter Bugge (Churchwarden).

ST. MARY'S NEWS

The Lenten calendar at St. Mary's kicks off on Ash Wednesday, February 18th, when we will be celebrating a morning Mass at 10.00am and also a special evening Mass, with the symbolic act of the Imposition of Ashes, at 7.00pm.

Our usual regular Masses

Sundays 8.00am and 10.00am

Tuesday 9.30am Morning Prayer

10.00am Mass

Wednesday 6.30pm

Evensong 7.00pm Mass

Thursday 9.30am

Morning Prayer 10.00am Mass

Father Matthew ✠

Parish Notices

Robert (Bob) Punter

of Adnitt House

Died 26th November
2025

✠ R.I.P. ✠

FRIENDS OF ALL SAINTS

A very big thank you to everyone who came along to our 'brain-storming' evening in the Village Hall in September, and signed up an interest for the forming a new Friends of All Saints fundraising group.

We understand that many of you already support your village church, for which we are extremely grateful and, whilst we had a kind offer for the post of Treasurer, we were unable to find a Chairman and Secretary, and one or two others to make a viable team.

With no further offers of help, and with member of the PCC being distracted somewhat by other issues at the moment, we have decided to 'shelve' the The Friends idea for the time being.

One of the main issues that we are having to face is the aging and very tired heating system that heats the church.

The boiler, which was installed in 1968, is on its last legs and needs replacing. However, the Net Zero policy of the Diocese won't allow the direct simple replacement of our old oil boiler with a new oil boiler. Choices for a suitable heating system are therefore extremely limited - basically to electric systems, and so far the quotes that we have had are for up to £85,000!

We are also coping with big changes on how local churches are organised and administered. The move is towards modernising the Church, gathering groups of churches into 'Church Minster Communities', that will share resources, clergy and funding

All in all, our small group feels we could not take on any more responsibility at this time. Should anyone feel that they would be willing to continue with the original 'Friends' plan do not hesitate to contact me at: dianajones929@gmail.com or the Church Wardens.

Diana Jones

✠CHURCH SERVICES ✠

Hexagon Benefice

February

Sunday 1 st	10.30am Thedd.
Sunday 8 th	10.30am HB
Sunday 15 th	10.30am Arnesby
Sunday 22 nd	10.30am Mowsley

All Saints Church invites you to an informal mid-week communion every Wednesday 10.00am
Coffee/teas served afterwards

Churchwardens:

Peter Bugge 07920 850155

Jeremy Ingram 07759 978463

www.allsaintschurchhusbandsbosworth

St Mary's Roman Catholic Church

Contact:

Fr. Matthew Pittam 01788 833547

E:matthewpittam@yahoo.co.uk



BEGLEY'S
Established 50 Years
GENERAL JOINERY SPECIALISTS



Free estimates
All items can be viewed at Shearsby Workshop

Tel: **0116 2478755** (day)
01858 880569 (eve)
Email: andybeg@hotmail.co.uk





VICARY
PLANT SPARES
UK LIMITED

Vicary Plant Spares Uk Ltd
The Old Station
Station Road
North Kilworth
Lutterworth
Leicester
LE17 6HY
01858880219



FORTHCOMING EVENTS

Tuesday February 3 rd	Parish Council Ordinary meeting, 7.30pm Sports Pavilion
Wednesday February 4 th	Historical Society 'The Eleanor Crosses Charity Bike Ride' 7.30pm Sports Pavilion
Saturday, February 7 th	Welford Cinema: 'F1 - the Movie', [2025], 7.00pm Welford VH
Monday February 9 th	Mobile Library
Tuesday February 10 th	Bosworth Art Group, 10.30am - 12.30pm Sports Pavilion
Friday February 13 th	Causeway Coffee, 10.00am - 11.30am Sports Pavilion
Tuesday February 17 th	SHROVE TUESDAY - Pancake Day <i>[Editor's Note: Yay!!]</i>
Wednesday February 18 th	ASH WEDNESDAY
Wednesday February 25 th	Village Lunch, 12.30pm Kilworth Springs Golf Club
Tuesday February 24 th	Bosworth Art Group, 10.30am - 12.30pm Sports Pavilion
Thursday March 26 th	Village Lunch, 12.30pm Kilworth Springs Golf Club
Sunday April 5 th	EASTER SUNDAY

LOCAL PLANNING NEWS

The following applications have been submitted to Harborough District Council:

- 25/01645/FUL Conversion and extn. to garage to create an annex & single storey rear existing to dwelling, 25 Highcroft
- 25/01669/FUL Change of use of land (retrospective) and erection of a storage building, Airfield Park, Sibbertoft Road
- 25/01689/PCD Discharge of Condition 11 (external lighting) of 23/00074/FUL, Springfield Farm, Kilworth Road
- 25/01693/TCA Works to trees (fell), 2 The Green
- 26/00002/FUL Conversion of steel barn to residential dwelling (revised scheme of 24/01053/FUL), Old Barn Farm, Welford Road
- 26/00003/FUL Conversion of barn to residential dwelling (resubmission of 23/01295/FUL), Old Barn Farm, Welford Road
- 26/00004/PCD Discharge of condition 2 (Details of curtilage) of 25/01500/FUL, Office at Stable Barn Farm, Leicester Road

Recently determined applications:

- 25/01248/FUL *[Approved]* Proposed equestrian worker's dwelling (part retrospective), Lavender Lakes, Leicester Road
 - 25/01293/PDN *[Approved]* Notification for proposed change of use of agric. building to dwelling, Lodge Farm, Walton Lane
- Current applications may be inspected during normal working hours at the Council Offices, The Symington Building, Adam & Eve Street, Market Harborough or at the Parish Office, 2a Mowsley Road.*

Planning applications can be viewed on-line at www.harborough.gov.uk/planning

BANK BREAKING NEWS!

The Harborough Banking Hub, is now open at 1 St. Mary's Place. The hub is funded by the major banks and is overseen by the Post Office, and provides basic banking services.

Opening hours: 9.00am - 12.00pm and 1.00pm 5.00pm

- *Monday: Natwest
- *Tuesday: Santander
- *Wednesday: Lloyds
- *Thursday: HSBC
- *Friday: Barclays



MOBILE LIBRARY

Visiting library times: Monday every three weeks

Stops & Times (See dates above)

Welford Road: 12.05pm - 12.30pm

Butt Lane: 12.40pm - 1.00pm

Mobile library Service 0116 3052695 libraries@leics.gov.uk

District of Harborough



We collect up to 3 large household items or 12 sacks of waste for a charge of £48.36
Search: Harborough Bulky Waste

Feb-26

Mo	Tu	We	Th	Fr
2	3	4	5	6
9	10	11	12	13
16	17	18	19	20
23	24	25	26	27



All aspects of vegetation management, landscape maintenance and weed control

Urban, highway, sports, industrial and domestic

LanGuard Ltd • Packs Hill Farm • Station Road • Husbands Bosworth • Lutterworth • Leicestershire • LE17 6JN

Tel: 01858 880 898 • Fax: 01858 880 720

Email: info@languard.co.uk

Springfields



**HIGH STREET
HUSBANDS BOSWORTH**

Opening times:
6.00am - 9.00pm
7 days a week
FREE to use Cash Dispenser

National Lottery