

PAVILION PROGRESS

Work to extend and refurbish the meeting room at the Sports Pavilion and improve disability access to the facility is almost complete.

The project, which has been supported by the Parish Council and generous grants from The Mick George Community Fund, has more than doubled the capacity of the meeting room, improved the storage area and provided designated disability-accessible car parking and a level route into the hall.

The work was undertaken to increase capacity for general meetings and provide better facilities for functions, such as children's parties and sports gatherings that are able to use the outside space of the playing field as an extension to the hall.

If you are interested in hiring the facility, currently as a whole unit including meeting room, changing rooms, toilets and kitchen, please contact Patricia Hobson on 880070 or the Parish Clerk on 881109.



POSTAGE STAMP RISE

Royal Mail have recently announced the third increase in the cost of postage in 18 months, with a rise in first-class stamp prices, for standard size letters from Monday, October 2nd.

The cost of a first-class stamp will go up to £1.25 (from £1.10), with a corresponding rise in the price of other stamps.

Standard letter second-class stamps, however, will remain at their current price of 75p and Christmas stamps or 'special' stamps with pictures on will still remain valid. Also, bar-coded first- and second-class stamps that you already hold can still be used.

For a full breakdown of postal charges across the board please go to:

www.royalmail.com/prices2023

CAT CHIPS...

No, not a tasty feline side dish!

Just a reminder that from June next year all domestic cats must be micro-chipped.

From June 10th 2024, all pet cats in England over 20 weeks old must be micro-chipped and the owner's details held on a recognised pet micro-chipping database. Database records must be kept up to date or the owner could face a fine of up to £500.

Farm cats and, essentially feral, cats that live predominantly outside will be exempt.



BREAKING NEWS...

British Summer Time to end soon...

Don't forget to put your clocks **BACK** one hour when you go to bed on Saturday, October 28th.

Spring forward; Fall back!

BAGGAGE TRAIN

The casual visitor to Hunters Close recently could be excused for thinking that the road had been the target of a concerted fly-tip incident or bin collection strike... But, no - this vast mountain of material was the latest result of the FOBS BAG2SCHOOL collection.

Well done to Claire and the FOBS team, and everyone who donated unwanted items to the collection, which amounted to 371kg, raising £185.50 towards those 'little extras' for the school.



Husbands Bosworth C of E Primary School



Are you looking for a school for September 2024?

Have you already selected Husbands Bosworth C of E Primary School as one of your places?

We invite you and your child (if you wish to bring them) to join us for a tour of our school. This will be an opportunity to ask us any questions as well as seeing our amazing school.

We will be offering appointments for families. We are offering 30 minutes to come and explore the school. The times are between 9.30 - 10.30am on [Wednesday 4th October 2023]. If you can't make that time, we are happy to provide tours of the school at a time that suits you. Please call the office **before school** to book an appointment.

We provide a school that is safe and nurturing with a record of supporting children to be knowledgeable and well-rounded. The warm and welcoming feel of the school is always noted by visitors.

Contact the office on **01530 881109**.

Scan the QR code for the prospectus and other links.



BUGLE POSTBAG

From Graham Peace, Welford Road

Further to my letter to the *Bugle* about my daughter, and her friend's, intention to walk 100 miles over the Late Summer Bank Holiday weekend to raise funds for LOROS. I'm pleased to report that over the four days they completed the series of walks around Rutland Water, Pitsford Reservoir, the Grand Union Canal and the Brampton Valley Way and, thanks to everyone's generosity, have raised £4,174.41 so far.

Editor's Note: Gemma and Juliet were aiming to raise £1400, in memory of their mums, Sue Peace and Sue Sterland, to enable LOROS to purchase a syringe driver, which automatically delivers pain relieving drugs.

www.justgiving.com/page/gemandju100miles-1678811161396?utm_term=g6aGnE7qE

From Diana Jones, Senior Churchwarden, All Saint Parish Church

We're busy making plans for All Saints Christmas Trail and Festive Market and are looking for willing helpers. Anyone willing to help in any way, especially with new ideas, would be most welcome. Please contact Di Jones 880741.

POLICE FILE



To contact your Dedicated Neighbourhood Team (DNT) online, use the quick and simple online contact tool - Search *Lutterworth Police*. You will be asked a few questions to make sure your query gets to the right place.

LUTTERWORTH BEAT SURGERIES

October

Tuesday, October 3rd, 6.00pm - 7.00pm

Husbands Bosworth Village Hall

Friday, October 27th, 1.00pm - 2.00pm

Kimcote Road, Gilmorton

Our Local Beat Surgeries offer a chance for the public to meet your local Beat Team in person and raise any concerns that you may have about local policing. We are also able to point you in the right direction for crime prevention and personal safety advice.

SUPER PRISON DECISION DELAY

The Ministry of Justice (MOJ) have again put back the decision on the controversial Gartree super prison, with the new date set for November 8th. The proposed new prison is planned to take up to 1,700 male prisoners, which will dwarf the 700 capacity existing facility, and require over 850 staff.

Campaigners against the prison, which will be operated separately to the adjacent HMP Gartree Category B men's prison, say roads around the site are not suitable for such a large increase in traffic. The MOJ have argued that an adequate public transport service is available from Market Harborough, but have seemingly ignored the current threat to the service under the County Council's proposed public transport review.

Local MP Neil O'Brien, who has supported the campaign against the new prison, said there could potentially end up being no public transport to the site, forcing staff and visitors to use private transport.

MARIE AINGE PHOTOGRAPHY

Now taking bookings where I can come to you.

*Farm & stableyard visits.
Picnic in the Park or Garden
time with loved ones and pets.
Slots now available. Prices are
from £55.*

*View Facebook & Flickr.com
Contact 01858 880823
Email: aingell@sky.com*



Marie Ainge Photography

THE BUGLE TEAM

Editor:

Melvyn Forman

10 Church Lane

Tel: 880281

Email: bosworth_bugle@talk21.com

Treasurer & Advertising:

Ralph Horton

18 Highcroft

Tel: 880526

Contacts:

Mike & Sylvia Price

3 Highcroft

Tel: 880902

Jo Horton

18 Highcroft.

Tel: 880526

Frances Smith

10 Butt Lane

Tel: 880225

Penny Mattock

9 Fernie Court

Tel: 881140

Heather O'Connor

16 Fernie Court

Tel: 880165

Postal Subscription & distribution:

Melvyn Forman

Tel: 880281

Email: bosworth_bugle@talk21.com

www.husbandsbosworth.info

COPY DEADLINE
15th OF THE MONTH
PRECEDING PUBLICATION

POLICE FILE

Market Harborough & Lutterworth
Police

Dedicated Neighbourhood Team

Insp. Liz Perry

Sergeant Charlie Davies

PC James Day

PC Jason Rainbow

PCSO Alexander Caswell-Jones

PCSO Steve Adams

Market Harborough Police Station,
Fairfield Road,
Market Harborough,
0116 222 2222

[harboroughandwigston.npa@leics.
police.uk](mailto:harboroughandwigston.npa@leics.police.uk)

CRIMESTOPPERS:

0800 555111

ACTION FRAUD:

www.actionfraud.police.uk

0300 123 2040

Emma Lane
WEDDINGS & EVENTS

For all your wedding & event planning needs

We cater for private parties, marquee events and corporate gatherings.
Please contact us and let us help you.

W: www.ejweddingsandevents.co.uk
E: hello@ejweddingsandevents.co.uk
T: 07920 464555

BOSWORTH IN FOCUS

HISTORICAL SOCIETY

The first meeting of Husbands Bosworth Historical Society's 2023-24 winter programme will be on Wednesday, October 4th when we will be welcoming the Friends of the Great Central Railway, who will be speaking about their exciting Reunification Project.

The scheme aims to reconnect the two sections of track that were severed when the line was closed in 1966. Linking the Leicester to Loughborough section to the northern Loughborough to Nottingham section will create a continuous 18 mile heritage line.

The Great Central Railway (GCR) is the only double-tracked main line heritage railway in the country, and is the only preserved railway where two trains are able to pass at speed on live-running tracks, as they would have done in the commercial days of the line.

The meeting is at 7.30pm at the Sports Pavilion, Kilworth Road.

This is an open meeting... Come and join us, everyone welcome.

Subscriptions, £12 for the year, for those wishing to join the Society, will be taken at our next meeting on Wednesday, November 1st, when we will be welcoming the Friends of the Ashby Canal Society.

BOSWORTH SKY AT NIGHT

Astronomy from your Backyard

Looking south (towards Welford) Pegasus the winged horse is high in the night sky in October. Seen as the mythical horse, upside down at this time of the year (*see picture*), the most recognisable feature is the large asterism known as the Great Square which makes up the body of the horse. Made up of four bright stars; *Markab*, *Scheat*, *Algenib* and *Alpheratz* - the Great Square is the centrepiece of Pegasus, easily recognizable because it is surrounded by mostly blank sky. The neck and head of the horse are also easily distinguished with the aptly named star, *Enif*, Arabic for 'nose'. This is the brightest star in Pegasus and readily visible to the naked eye. It is relatively cool (for a star anyway) with a temperature of 4,200°C, and at 670 light years from Earth it has a calculated luminosity of 6,700 times that of our Sun, as befits a supergiant star!

A lot of star names are Arabic. Islamic astronomers produced a wealth of astronomical work and refined the star systems, compiled better tables and devised instruments, including the telescope, which improved their ability to make observations.

Looking South East in the pre-dawn sky the planet Venus shines dazzling bright. Watch out for a splendid conjunction before dawn on October 10th when Venus is near to the bright star *Regulus* in the constellation Leo and a crescent Moon.

The Orionid meteor shower peaks at midnight on October 21st/22nd producing fast meteors, leaving lingering trails. There is also a partial eclipse of the Moon on the night of October 28th where a portion of the moon will go copper coloured with greatest eclipse occurring at 9.14pm.

Mike Price

WILD ABOUT BOSWORTH

Lichens

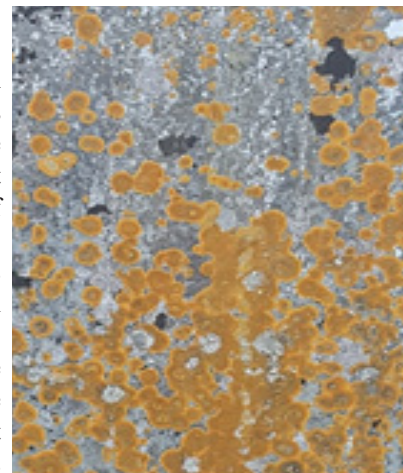
No, the picture isn't of an abstract painting...it is lichen growing on a local stone. For a long time, scientists thought lichens were the first living things to move onto land from the primordial ocean. However, a recent controversial study suggests they appeared millions of years later, after ferns and primitive plants.

The green stuff you see on and in local waterways is algae and cyanobacteria. Both absorb minerals from the water and produce sugars via photosynthesis. Surprisingly, there are also microfungi living in the mix. None of these can exist on dry land. Algae have no access to the minerals they need, and fungi cannot get essential carbohydrates. Fungi can extract minerals from rocks and algae can still photosynthesise out of water. So, if they wash up on dry land at the same time, they can snuggle together and share resources - the algae (or cyanobacteria) taking minerals from the fungi and the fungi receiving sugars from the algae. So, all the lichens you see today are two-somes (or even three-somes...).

Lichens are not just ornamental, many varieties are edible, some have medicinal value and some are used in deodorants, toothpaste, and perfumes. Santa's reindeer survive arctic winters by eating 'Reindeer Lichen' and lichens contain chemicals that make crimson, purple and bright yellow dyes. Litmus dye extracted from lichens is used to make the litmus paper that we used in school chemistry lessons to test for acid or alkalinity.

Two final lichenesque points... lichenometry is used by archaeologists to estimate how long a rock surface has been exposed to the elements. And lastly, lichens tend to grow on the northern side of tree trunks. So, if you're lost in the woods, you can use them to find your way home!

Mike Chanter



F&W Plumbing & Heating Services Ltd

Based in North Kilworth

- ▣ Bespoke bathroom & kitchen design and installation
- ▣ All types of wall and floor tiling
- ▣ Hot and cold water systems
- ▣ Unvented hot water systems

Contact Jason on 07866741261

Email: jasonfandw@hotmail.com

www.fandwplumbingandheatingervices.co.uk

Over 30 years experience in designing and installing contemporary and traditional kitchens and bathrooms

Project manage personally with all associated trades for a co-ordinated high quality finish with minimum disruption



P.C. BUILDING SERVICES LTD



Complete building service
Specialist in new build
Quality renovations
& Extensions

Tel/Fax 01858 881202

Email: pcbuildserv@btinternet.com

Walton Grange, Bosworth Road
Walton, Lutterworth, Leics LE17 5RW

SCHOOL REPORT

HUSBANDS BOSWORTH C. of E. PRIMARY SCHOOL Head Teacher Alan Eathorne

Husbands Bosworth CE Primary School is delighted to announce an exciting new collaboration with St Andrews, North Kilworth CE Primary, South Kilworth CE Primary School and Lubenham All Saints CE Primary School. As existing members of the Learn Academies Trust, and all situated within smaller communities within eight miles of each other, the four schools will now be working even closer together, to form a new strategic partnership.

Through this 'sister school' collaboration, each school will be able to access enhanced educational opportunities, whilst fostering a sense of community among themselves, benefiting students, teachers and families alike.

Alan Eathorne, Executive Head at Husbands Bosworth, said, "Being part of the Learn Academies Trust, has always meant joining together in fellowship to learn from each other and support each other. Our new strategic partnership is an extension of this ethos, where we will be able to strengthen our educational resources, share best practice and encourage cross-school cooperation with our new sister schools. We are incredibly excited for the opportunities this partnership will bring to all our staff and families, while allowing each school to maintain its own identity, values and personality."

Husbands Bosworth CE Primary School has always been committed to providing a high-quality education that caters for individual needs and fosters a love for learning. It is expected that this partnership will not only enhance the educational opportunities available to students but also create a supportive network among educators, strengthening their professional development, ability to share best practice and develop a spirit of collaboration.

Continuing, Alan Eathorne, said, "By pooling our resources, sharing knowledge and promoting open communication, we can create an enriched learning experience for our students and nurture their potential to the fullest. Much of the work will take place behind the scenes, however, on a day-to-day basis, children and their families will see joint projects between the schools, extra-curricular activities and cultural exchanges, widening the opportunities we can provide. We really are very excited for what the future will bring."

BYGONE BOSWORTH

Images from the Historical Society's Archive Collection

This picture, kindly passed to us by Clifford Garner, of his dairy cows ambling up Honeypot Lane from pasture for milking, reminds us of a key part of our village's heritage.

At the time that this picture was taken in the 1960s there were about 20 farms in the parish, at least eight being dairy farms, so the movement of livestock to and from grazing would have been a regular sight. Several farmsteads, such as Home Farm and Croft Farm on Mowsley Road, were within the built-up village, having only minimal winter housing for their livestock and using outlying land for summer grazing; these farmers were known as graziers.



FOBS NEWS

Dabbers at the ready for Bosworth Bingo!
The FOBS Committee is excited to bring you a fun Bingo evening for all to enjoy. Parents, friends, neighbours, family - EVERYONE is invited to come and support the school and what is set to be a really great evening - with some great prizes up for grabs too!

Saturday 7th October

Tickets - £10 including all games and nibbles

Bar available all evening

7.30pm arrival, EYES DOWN at 8pm!

Purchase tickets in advance via bank transfer to account (details on flyer) or to FOBS on ParentPay.

Contact Emma for more info or for cash payment: 07773 569173

Man Alive, Dancing Queen and 2 Little Ducks - we've got the Bingo Lingo and the Bar, you bring your friends and have a great night!

BEGLEY'S

Established 50 Years

GENERAL JOINERY SPECIALISTS

Wooden Windows
and Doors
Porches
Conservatories
Carpentry & Building



Free estimates

All items can be
viewed at Shearsby
Workshop

Tel: 0116 2478755 (day)

01858 880569 (eve)

Email: andybeg@hotmail.co.uk

COMPLETE CAR CARE

Accident repair specialist

Bodywork, dent, scratch and stone-chip repair

Servicing, alloy refurbishment, welding

MoT repair

Valeting, full body polish

Parking sensors, tyres & exhausts, etc. fitted

Call Ben on 01858 880404

bencompletecarcare@outlook.com

FLOWERS BY HEATHER

Husbands Bosworth



*Flowers and floral
arrangements for any
occasion*

Call for a free consultation.

*Many years experience
in the floral industry.*

*Follow or like me on
Facebook.*

Call me on 07773 063063

MORE BOSWORTH IN FOCUS

ART GROUP

Bosworth Art Group restarts on Tuesday, October 17th. We are a small, friendly and informal group of arty minded souls meeting on alternate Tuesday mornings, 10.00am to 12.00noon in the Sports Pavilion, Kilworth Road. Meetings are on a pay-as-you-go basis, £2.50 per session to cover room hire and coffee.

The group is self tutored and all mediums and skill levels are welcomed.

Interested? Come along and try a session... Art Group dates for October are: Tuesdays, 17th and 31st.

For details call Melvyn on 880281.

ART EXHIBITION AND SALE

Welford Watercolourists Annual Art Exhibition and sale of work will be on Saturday, October 14th and Sunday, October 15th at Welford Village Hall from 10.00am to 4.00pm each day.

Homemade light refreshments will be available throughout the weekend.

All profits this year will go to *Rainbows* childrens' charity

MILLENNIUM WOOD

The trustees of the Millennium Wood community woodland would like to thank Husbands Bosworth Parish Council for the kind donation of a rotary mower, which will be used to help maintain the site for the benefit of the community.

Along with the mower, we also have access to a petrol strimmer and various handtools. We know that the facility is well used but we do now need to revive the regular maintenance work days, previously one Saturday morning per month during the winter, when our main job is to clear and maintain the pathways. So, offers of help with any aspects of the Woodland maintenance would be warmly welcomed. If you fancy a physical work-out in the fresh air for the community good please contact Jackie on 880910.

CAUSEWAY COFFEE

The next Causeway Coffee Morning will be on Friday, October 13th 10.00am - 11.30am. Causeway Coffee meetings are held on the second Friday of each month in the Sports Pavilion, Kilworth Road.

Meetings are open to any villager who is retired and living alone - come along for a coffee/tea and a chat with friends.

For more information please contact Heather on 880165.

CRAFT GROUP

The Craft Group meets on the second Wednesday of each month in the Committee Room of the Village Hall, 7.00pm to 9.00pm. This is a friendly and informal gathering where craft-minded people can pick up new ideas and practise their craft in a relaxed atmosphere away from the distractions of home life.

For details contact Gail on 880413.

WELFORD CINEMA

Welford's 'Flicks in the Sticks' Cinema reopens for business with a showing of 'The Unlikely Pilgrimage of Harold Fry' (2023) on Saturday, October 7th at 7.00pm, Welford Village Hall.

Harold Fry (played by Jim Broadbent) is just an ordinary bloke who has passed through life, living on the side lines, until he walks out to post a letter to an old friend, Queenie, who is suffering from cancer... and just keeps walking.

Broadbent is once again in his element here, exploring guilt, commitment and lost opportunity, and is more than ably supported by Penelope Wilton as his long-suffering wife, Maureen.

Admission on the door: £7 per person

More dates for your diary

Saturday, November 4th

A Man called Otto (2022)

Saturday, December 2nd

Bank of Dave (2023)

VILLAGE LUNCH

The next Village Lunch will be on Thursday, October 26th at Kilworth Springs Golf Club, South Kilworth Road, North Kilworth. We meet at 12.30pm to eat at 1.00pm.

The Village Lunch is a great place for those new to the area, retired or living alone to catch up with old friends and all the gossip, and make new friends in a warm and friendly atmosphere.

The cost of the two-course meal, including tea/coffee and mints is £12.50 per person.

Special dietary needs can be catered for by prior arrangement.

Please note: We can now take payment by card. (*We customarily take a tip at the table!*)

Message from Janice

We now have a 'new' lunch lady!! She is Jo Hutton and her contact number is 07711 943914.

Jo has lived in Bosworth for a while and is gradually getting to know people, but if you call her to book please give her your name as she is still getting to know names and faces! Many thanks, Janice

Next month's Village Lunch date:

Tuesday, November 28th.

The special Christmas Lunch will be on Wednesday, December 20th.

FESTIVE WORKSHOP

Heather will be holding her special Christmas wreath-making workshop evening at the Sports Pavilion, Kilworth Road.

Learn the craft of wreath making and take home your own finished wreath at the end of the evening - all materials will be provided. (End of November tbc)

Places are most likely to be limited for this popular workshop, so if you are interested please contact Heather on 07773 063063 as soon as possible to book your place.



LanGuard Vegetation Management
Safeguarding the Environment

All aspects of vegetation management, landscape maintenance and weed control

Urban, highway, sports, industrial and domestic

LanGuard Ltd • Packs Hill Farm • Station Road • Husbands Bosworth • Lutterworth • Leicestershire • LE17 6JN

Tel: 01858 880 898 • Fax: 01858 880 720

Email: info@languard.co.uk



BESPOKE
PROPERTY RENOVATIONS






J.R.Bespoke Property Renovations are an experienced and trusted Project Management and Construction team based in North Kilworth, Leicestershire.

If you have a project or idea in mind, please don't hesitate to contact us either by phone or via our website.
Tel: 07846 741 261 (Jason Wright)
www.jrbespokeproperties.com

PARISH COUNCIL NEWS

Report of the Ordinary meeting of Husbands Bosworth Parish Council held on Tuesday 5th September 2023 at 7.30pm in the Sports Pavilion

Present: Cllr. Bolter (in the Chair), Cllr. Forman, Cllr. Gallagher & Cllr. East. Apologies received from Cllr. Hobson and Cllr. Peel. Two members of the public.

Visitors' Questions

■ A parishioner wishing to donate a defibrillator asked if progress had been made. Clerk confirmed that a potential site had been identified and initial discussions with the owner had taken place. Guideline costs were shared and the parishioner confirmed that he was happy for the project to proceed

Minutes of the previous meeting were approved and signed as correct

Matters Arising from the minutes not included on this agenda for report only

■ Two Councillors agreed to meet with the school Headmaster to discuss school's enrolment policy following receipt of correspondence from LCC Director of Children and Families in relation to Section 106 (Education) funding

■ Parish Councillor pictures to be added to Councillors bios on the parish website

■ Clerk confirmed meeting took place with current grass cutting contractor regarding extending the contract

■ Clerk was asked to seek quotes for the restoration of the Burial Book

■ Clerk received a quote for purchase of an oak tree and associated items to commemorate the King's Coronation. Clerk to further investigate the cost of providing a larger tree within agreed budget

Finance

■ August 2023 Bank Statements, Cashbook Reconciliation & Bank Reconciliation presented for noting and accepted

Planning Overview

■ The August 2023 planning application summary was presented and agreed

Pavilion Extension Update

■ The pavilion extension is close to completion. Clerk was able to confirm a private donation as a contribution towards the Pavilion development. It was requested that this donation be considered for use in the development of roadside and carpark lighting.

■ It was requested that an agenda item regarding an official name for the new meeting room be included in the October agenda

■ Council noted that the Historical Society's projection screen owned by the Historical Society had been damaged and would likely need to be replaced. It was agreed to include this in the October discussion

■ Clerk was asked to contact Gigaclear to discuss the installation of fibre cabling to the Pavilion

Parish Maintenance

■ Following consultation, it was agreed not to trim the oak tree on The Green to deter bird fouling. It was agreed to ask the Caretaker to clean the bench as necessary

Clearing of Ditch behind Scout Hut and end of Dog Walk

■ It was agreed to arrange an on-site meeting to discuss the required work

Donation of Parish Lawn mower (1 of 2) to Millennium Wood Trust

■ Council agreed to donate one of the parish grass mowers to the Millennium Wood Trust

Parish Councillor Vacancy

■ Clerk to advise HDC of the recent Councillor resignation. It was agreed not to seek to recruit a replacement Councillor at this time

Any Other Business

■ Clerk to request an update on work to repair the failed lighting on Berridges Lane

■ Council was asked to consider the purchase of a trailer for the use of the Caretaker. Clerk was asked to seek information for review at the next meeting

■ Council noted that the current contractor for verges and greens will not be continuing following the completion of the 2023 season. Clerk was asked to seek potential contractors for this work for 2024 and beyond

■ It was noted that the war memorial, particularly the name plates are rather dirty and in need of cleaning. The Clerk was requested to investigate potential companies who specialize in this type of work. Clerk to investigate specialist cleaning companies for war memorial.

Confirmation of date and time of next meeting

There will be an Ordinary Parish Council Meeting held on Tuesday 3rd October 2023 in the Sports Pavilion

A full copy of the Minutes can be viewed or downloaded at: www.husbandsbosworthpc.org.uk or by request to the Parish Clerk.

SID REPORT

Readings from the Speed Indicator Device

Welford Road

Period: 16.8.23 - 23.08.23

Vehicle movements: 7147 Av./day: 1021

Average speed: 27.43mph

Highest recorded speed: 61mph

Welford Road

Period: 23.08.23 - 30.08.23

Vehicle movements: 7665 Av./day: 1095

Average speed: 27.17mph

Highest recorded speed: 62mph

Kilworth Road

Period: 30.08.23 - 06.09.23

Vehicle movements: 6689 Av./day: 956

Average speed: 33.57mph

Highest recorded speed: 65mph

Kilworth Road

Period: 06.09.23 - 13.09.23

Vehicle movements: 7580 Av./day: 1083

Average speed: 32.90mph

Highest recorded speed: 66mph

FIRS FARM REPORT

The contractors on site at Firs Farm report that the works to clear the illegally dumped waste at the site are progressing well, with much of the material now removed.

The County Council has confirmed that the remedial work also includes restoring the affected land to agricultural use, with the intention to re-let the farm as a viable agricultural holding as soon as possible. Following concerns raised by the Parish Council, odour and dust suppression air-misting equipment was installed and has proved effective in reducing smells from the disturbed waste. Weekly environmental inspections of watercourses and site run-off have found no issues relating to contamination.

'JJ's Kiddycare'



* FREE Pre-school sessions for 2, 3 & 4 year olds

* Full Day Care 0-5yrs

Situated on a farm site between South Kilworth and Welford

* Breakfast and After School clubs. (4-14years)

* Holiday Clubs during all Northants & Leics school breaks

Tel no. 01858 575642

www.jjs-kiddycare.co.uk

Email: admin@jjs-kiddycare.co.uk

- Toe nail cut
- Corns
- Verrucas
- Ingrown toe nails
- Hard dry skin
- Fungal nails

Happy Feet
Registered Foot Care Specialist

Home appointments
07842 266575

www.happyfeetmidlands.com

CHURCH NEWS

All Saints Parish Church & St. Mary's Roman Catholic Church

ALL SAINTS CHURCH NEWS

Why Read the Bible?

Of what interest could the Bible possibly be? Parts of the Bible were written 3,500 years ago, and that was only the first writing down of an oral tradition that was much older. Even the most modern parts of the Bible are 2,000 years old - so why give this ancient, dusty book a read in the 21st century?

Firstly, this book has transformed the world. In the first chapter of this Bible, we read the creation story and it tells us something that was stunning to the first people that heard it. The Bible tells us:

'So God created mankind in his own image, in the image of God he created them; male and female he created them.'

That one sentence transformed the world. In a world where the rich and powerful did whatever they liked, treated the poor and weak however they liked, this one sentence challenged that to its core. It told us that every single person has value, because every single person carries something of the divine in them. So whether people are rich or poor, old or young, physically strong or weak, sick or healthy, you cannot treat them without respect. It also tells us that men and women are equally important to God - something that challenged societies where men were often seen as more important than women.

From this one idea came the rule of law, the abolition of slavery, human rights, the care of the disabled, hospitals to care for the sick and dying, gender equality - all of which flow out from that one sentence in the first chapter of the Bible.

Secondly, the Bible isn't only a book. Actually, it is more like a 'place'. It is a place where God meets us and speaks to us. You can read the same passage of the Bible a hundred times and you will find that time after time, something new will jump out at you, will challenge you, will give you guidance for your life, bring you encouragement and insight.

So, that is why this book is worth reading. May it become part of your spiritual practice to open it every day, to allow God to speak to you through it, give you insight and guidance for your life, to let the ideas shape who you are and how you live. May the Bible be a blessing to you. Amen.

Stephen ✠



Parish Notices

Maureen (Mo) Pye
of Berridges Lane

Died 15th August 2023

Age 83 years

✠ R.I.P ✠

On Sunday, October 1st All Saints Church will be hosting a special Benefice Service at 10.30am to stimulate on-going support for our church.

This is an extra service, opened to the whole parish; everyone will be warmly welcomed. Coffee and biscuits served afterwards.

ST.MARY'S NEWS

We continue to celebrate Sunday Mass at 11.00am and every Thursday at 10.00am. All welcome.

All Saints Day is on Wednesday November 1st, which we will celebrate at St. Mary's on the eve (October 31st) with Mass at 7.00pm.

We are pleased to announce the appointment of a new organist and are waiting for his application process to complete. This will greatly help with our music at St Mary's.

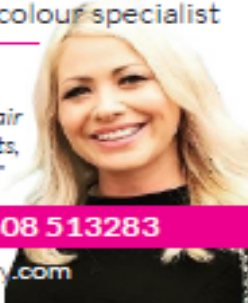
Father Matthew ✠

HAIR BY LYNNDY

Award winning hair stylist & colour specialist



"Now welcoming everybody to my hair studio in Husbands Bosworth for cuts, colours, blow-dries & wedding hair"



Appointment only - 07808 513283

lynndy@hairbylynndy.com

✠CHURCH SERVICES✠

Hexagon Benefice

October 1 st	10.30am HB 6.00pm Shearsby
October 8 th Oct	10.30am Arnesby
October 15 th Oct	10.30am Thedd
October 22 nd Oct	10.30am HB
October 29 th Oct	10.30am Arnesby

All Saints Church invites you to an informal, warm and friendly mid-week communion every Wednesday 10.00am

Senior Churchwarden:

Di Jones 880741

Curate:

Stephen March

Stephen.March@LeicesterCofE.org

St Mary's Roman Catholic Church

Mass celebrated every Sunday at 11.00am

Contact:

Robert Constable-Maxwell 880361

Fr. Matthew Pittam 01788 833547

E:matthewpittam@yahoo.co.uk

LUTTERWORTH FOOD BANK

The next collection in aid of Lutterworth Food Bank will be on Friday, October 6th at All Saints Church, 2.00pm to 4.30pm. Please give this well-deserved cause all your support.

Tea and coffee served all afternoon. Everyone welcome.

THANKS...

Many thanks to blacksmith and metalworker, villager Jason Green, for repairing the broken hinge on All Saints Churchyard gate - quite a departure from Jason's usual work, making reproduction medieval weaponry for re-enactors groups!

The eagle-eyed may have spotted some of Jason's ill-disguised brown paper parcels at the Post Office counter, awaiting dispatch to warring enthusiasts across the country...



- RENOVATION
- EMERGENCY REPAIRS
- ROOFING
- EXTENSIONS
- BUILDING MAINTENANCE
- PLASTERING

CALL GRAY INMAN-HALL : 07938217578
OR EMAIL : INMAN-HALLBUILDING@HOTMAIL.COM

FORTHCOMING EVENTS

Tuesday October 3 rd	Parish Council Ordinary meeting, 7.30pm, Sports Pavilion
Wednesday October 4 th	School Open Morning for prospective pupils, 9.30am - 10.30am
Wednesday October 4 th	Historical Society Opening Meeting - Great Central Railway, 7.30pm Sports Pavilion
Friday, October 6 th	Foodbank Collection 2.00pm - 4.30pm All Saints Church
Saturday October 7 th	FOBS GRAND BINGO, 7.30pm Village Hall
Wednesday October 11 th	Craft Group, 7.00pm Committee Room, Village Hall
Friday October 13 th	Causeway Coffee morning, 10.00am - 11.30am Sports Pavilion
Sat./Sun. October 14 th & 15 th	Welford Watercolourists Exhibition & Sale of works, 10.00am to 4.00pm Welford Village Hall
Tuesday October 17 th	Bosworth Art Group, 10.00am - 12.00noon, Sports Pavilion
Friday October 20 th	Mobile Library
Wednesday October 26 th	Village Lunch, 12.30pm Kilworth Springs Golf Club
Sunday October 29 th	BRITISH SUMMER TIME ENDS at 2.00am... Clocks back!
Tuesday October 31 st	Bosworth Art Group, 10.00am - 12.00noon, Sports Pavilion
Saturday November 11 th	Govannan Celtic Music Concert, VH. Contact Ralph 880526 email:ralphhorton01@gmail.com
Sunday November 19 th	TOTS Village Hall Christmas Fair
Tuesday November 28 th	Village Lunch
Sat./ Sun. December 9 th & 10 th	All Saints Village Christmas Trail and Festive Market

LOCAL PLANNING NEWS

The following applications have been submitted to Harborough District Council:

- 23/01281/TCA Works to trees, 54 Bell Lane
- 23/01295/FUL Change of use of agricultural barn to a single residential dwelling, Old Barn Farm, Welford Road

Recently determined applications:

- 23/00877/FUL [Approved] Conversion of disused barn and garage into residential and erection of a storage barn, 19 High Street
- 23/00878/LBC [Approved] Listed Building Consent Conversion of disused barn and garage into residential accommodation, erection of an external link, erection of a storage barn and internal and external alterations, 19 High Street
- 23/00967/TPO [Approved] Works to tree (HDC TPO 97), 21a Mowsley Road
- 23/01017/FUL [Approved] Alteration of existing dwelling to create two separate dwellings, Old Barn Farm, Welford Road
- 23/01032/TCA [Approved] Works to trees (fell), 8 Bell Lane
- 23/01033/TPO [Approved] Works to trees (HDC TPO 97), 21a Mowsley Road

Current applications may be inspected during normal working hours at the Council Offices, The Symington Building, Adam & Eve Street, Market Harborough or at the Parish Office, 2a Mowsley Road.

Planning applications and other aspects of local government can be viewed on-line at www.harboroughonline.co.uk

N & S A Fisher – Wigston

Spa Lane
Wigston, LE18 3QD
www.fisherswigston.co.uk
Tel. 0116 288 1101



We offer:

*New Ford and Used Vehicle Sales
Ford Factory Trained Technicians
All Makes Servicing & M.o.T
FREE Ford Assist – AA Home Start & European Cover on all Ford Servicing
FREE Collection & Delivery Service*

MOBILE LIBRARY

Stops & Times
*School, Welford Road: 10.25am - 11.25am
Berridges Lane: 11.30am - 12.10pm
Butt Lane: 12.15pm - 12.50pm
Mobile library Service 0116 305 2695
email: libraries@leics.gov.uk*

District of Harborough



*We collect up to 3 large household items or 12 sacks of waste for a charge of £37.16.
Search: Harborough Bulky Waste*

Oct-23

Mo	Tu	We	Th	Fr
2	3	4	5	6
9	10	11	12	13
16	17	18	19	20
23	24	25	26	27
30	31			

MILITARY VEHICLE DRIVING AND TANK BATTLES AT **ARMOURGEDDON**

Military Museum

One of the Largest Collections of
WWII Vehicles and Militaria in the Midlands.

Our under cover collection includes post war vehicles, Main Battle Tanks, as well as an excellent selection of other American, German and British vehicles. With interactive displays and lots of things to see. Visit on a game day (Saturday, Sunday or selected Wednesday—April to October) and you will get to see some of our vehicles driving around.

01858 880 239

Chat to us Online
www.armouredgon.co.uk

Office hours Monday to Friday 0900hrs—1700hrs

DONALD CAMPBELL LANDSCAPES

Experienced in all
aspects of hard
landscaping, fencing,
stone-walling, block
paving and general
garden maintenance.
**Husbands Bosworth
area**

Tel. No. 07817 381 244