

HAVE YOUR SAY!

Your Parish Council meets eleven times a year, but once a year there is an Annual Parish Meeting and this is coming up on Tuesday, April 5th at 7.30 pm at the Sports Pavilion.

Annual Parish Meetings are a legal requirement and are an interesting phenomenon. Whilst electors can attend any Ordinary Parish Council meetings, they have no automatic right to speak (although Husbands Bosworth Parish Council does choose to open most meetings with an opportunity for visitors to ask questions).

The Annual Parish Meeting, however, is more informal and any elector registered in the Parish has a right to speak on any subject relating to parish affairs. So, these meetings act as an annual democratic point of free communication - your opportunity to have your say! Historically, of course, this type of open forum dates back to the Middle Ages, when all decision-making was carried out at meetings of the whole community.

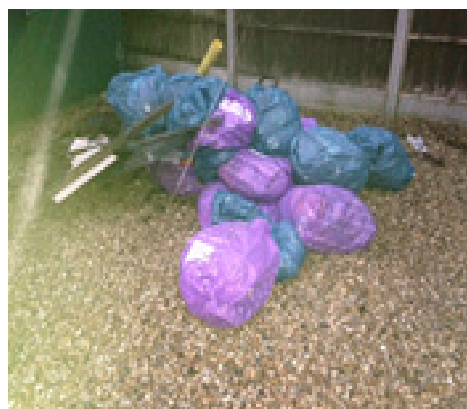
We invite guests from the local authorities to attend our Annual General Meeting and to answer questions directly to the electorate on local matters. This year the local Police Beat Team will be sending a representative along. Do come along and join us, take this opportunity to air your views and meet your Councillors and Parish Clerk - light refreshments will be served.

Patricia Hobson, Chair - Husbands Bosworth Parish Council

KEEP BOSWORTH TIDY

Village Litter Pick Sunday, April 10th 9.00am

Come along and show your pride in our community; set aside a couple of hours to join our annual Village Litter Pick. The more villagers who turn up to help the easier the task will be - many hands make light work... We have some equipment and a supply of bin-bags but if you have your own 'picker' please bring it along; stout footwear and work gloves for grovelling in the undergrowth would also be an advantage!



GUESS WHAT? IT IS BACK.....

After a two year enforced lay-off Safari Supper returns on Saturday 21st May -woohoo!!!!

The event which has been entertaining the village for several decades is being welcomed back now that covid measures have relaxed.

If you've never heard of the strange sounding event before you are in for a treat!

The evening kicks off with an aperitif in the Village Hall, where you will find out the address where your starter will be. Each subsequent course is then at a different venue, with a different set of fellow diners.

We suggest pairing up with a safari partner, but if you're flying solo this doesn't matter as we can accommodate 3s, or partner you with another single 'Safarian'. Tickets are £15 per person.

This is a great social event, especially if you are new to the village and fancy getting to know more people or a fab way for friends and villagers to catch up. If you are able to host a course for 6-8 people, you will receive a donation back towards your costs.

We really hope you will save the date and join us and help raise much needed funds for the school while having a fantastic, fun and friendly evening.



Friends of Bosworth School

SAFARI SUPPER

Saturday 21st May

7.00pm - late

Start Venue: The Watering Hole (aka Village Hall)

£15 Per Creature

Aperitif at the Village Hall - 3 Course Meal - Stroll around the village - Different house for each course - Opportunity to meet new people - Bring your own booze! Raise funds for the school.

We invite attendees to volunteer to host a course - a financial contribution will be given to help towards the cost of ingredients.

Contact Abby Ascoug for Tickets

01858 881477 / Absclarke@aol.com



SHOW AND TELL...

SAVE THE DATE! The 2022 Horticulture Show will be held slightly earlier than last year - on Sunday, August 7th in the Village Hall. The earlier date will hopefully allow us to include more vegetable and flower exhibits, which would otherwise be past their best display date... so get cracking and get growing!

We had an amazing show last year and hope that this year will be even better! We will again be increasing children's classes, in particular focusing on art and craft sections, as these have become increasingly popular.

As always, whether you are entering for fun or are particularly competitive, young or old, enthusiasm is all that is needed, so please join in! If nothing else, it is an opportunity to have a gossip over a slice of cake and a cup of tea (or sampling of the home brew entries!).

We aim to have the schedule available by the beginning of July and regular updates will be posted on *Facebook* and in the *Bugle*. In the meantime, can all the prize cup holders from the 2021 show please return the silverware as soon as possible to either Eleanor Murphy, The Old House, Honeypot Lane or to me at 3 Green Lane. I can collect if anyone is experiencing difficulty in getting out and about. Please call me on 0752 3146227 or email me kide.1962@gmail.com.

Karen Roffe

BUGLE POSTBAG

From Mike Chanter, Mowsley Court

On March 1st the government reversed its ban on neonicotinoid insecticides for use on sugar beet. It is estimated that one teaspoon of this poison can kill up to 1.25 billion honeybees!

What is the residual effect? After the harvest, will the neonicotinoids enter our food chain, will they remain in the soil, will they be washed into our streams and rivers? The environmental consequences of using these chemicals may well be devastating and I would encourage everyone to petition their MP to reverse this decision.

From Nick Morley, via email

Are you interested in forming a sponsorship/support group for a Ukrainian refugee family?

I own a property in Husbands Bosworth (I used to stay there when running my business in Wigston). The business is now closed, so my wife and I don't use the property much. We are happy to offer the property to a Ukrainian refugee family rather than rent it commercially.

However, we now live in Cumbria, four hours drive away, so it will need someone local, perhaps a group, to help the family integrate into our society, sort out schools, English, health system etc., and to manage the process.

Please contact me, Nick Morley at: morley184@gmail.com for further information.

From Ian Clowes, Community Recovery Worker South Leicestershire

I wanted to take this opportunity to introduce myself. I am a Community Recovery Worker for Public Health Leicestershire, assigned to work in parishes of south Leicestershire, in particular Husbands Bosworth.

Our current aim is in building back better communities, focusing especially on vulnerable groups, post-covid. We work closely with GP practices, mental health providers and social work teams, as part of the wider public health family. The service is funded and managed by Leicestershire County Council, and free at the point of need to Leicestershire residents.

If you know of a resident who would like to get out and about more and perhaps attend social groups or meetings but has lost confidence, simply tell them about our service and we will see how we may be able resolve any issues that they may have.

If you have any questions or would like to discuss anything in confidence please do not hesitate to contact our team: ian.clowes@leics.gov.uk 07526 928199

POLICE FILE



The Local Police Beat team recently caught up with former Lutterworth officer, PC 1261 Andy Cooper to thank him for his dedication and assistance in gaining Leicestershire Police's 'Dedicated Neighbourhood Team of the Year Award' for 2021.

'Coops', who repeatedly turned down promotion in order to stay local and 'in the field', has recently retired from the Force after over 30 years service. Cheers Coops!



THE BUGLE TEAM

Editor:

Melvyn Forman

10 Church Lane

Tel: 880281

Email: bosworth_bugle@talk21.com

Treasurer & Advertising:

Ralph Horton

18 Highcroft

Tel: 880526

Contacts:

Mike & Sylvia Price

3 Highcroft

Tel: 880902

Jo Horton

18 Highcroft.

Tel: 880526

Frances Smith

10 Butt Lane

Tel: 880225

Penny Mattock

9 Fernie Court

Tel: 881140

Heather O'Connor

16 Fernie Court

Tel: 880165

Postal Subscription & distribution:

Melvyn Forman

Tel: 880281

Email: bosworth_bugle@talk21.com

www.husbandsbosworth.info

**COPY DEADLINE
15th OF THE MONTH
PRECEDING PUBLICATION**

POLICE FILE

Your Local Neighbourhood Policing Team:

Sgt. 26 Ryan Coleman

ryan.coleman@leicestershire.pnn.police.uk

P.C. 2178 Malc Roberts

Malcolm.Roberts@leicestershire.pnn.police.uk

PC 2192 Paul Farrar

paul.farrar@leicestershire.pnn.police.uk

PC 2872 James Day

james.day2@leicestershire.pnn.police.uk

PCSO 6569 Peter Willson

peter.willson@leicestershire.pnn.police.uk

PCSO 6056 Jay Bellamy

jay.bellamy6056@leicestershire.pnn.police.uk

Or go to:

www.leics.police.uk and use the CONTACT US link at the bottom of the page.

CRIMESTOPPERS:

0800 555111

ACTION FRAUD:

www.actionfraud.police.uk

0300 123 2040

N & S A Fisher – Wigston

Spa Lane

Wigston, LE18 3QD

www.fisherswigston.co.uk

Tel. 0116 288 1101



We offer:

New Ford and Used Vehicle Sales

Ford Factory Trained Technicians

All Makes Servicing & M.o.T

FREE Ford Assist – AA Home Start & European Cover on all Ford Servicing

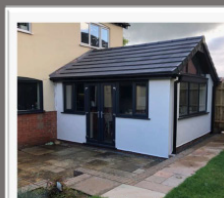
FREE Collection & Delivery Service

JR BESPOKE PROPERTY RENOVATIONS



JLR Bespoke Property Renovations are an experienced and trusted Project Management and Construction team based in North Kilworth, Leicestershire.

If you have a project or idea in mind, please don't hesitate to contact us either by phone or via our website.
Tel: 07866 741 261 (Jason Wright)
www.jrbespokeproperties.com



BOSWORTH IN FOCUS

AT HOME IN BOSWORTH

Let us make a slight detour this month after seeing a spam 'get rich quick' post on a village *WhatsApp* group. The property world has similar scams: attention-grabbing headlines.... 'Become a property millionaire in under 12 months with my secret techniques. No money or hard work required.'

Nonsense of course, but the appeal of making lots of easy money is timeless and powerful and a lot of people are easily duped into handing over thousands of pounds to the scammers, who peddle crackpot 'no money down' schemes, targeting people with little money who dream of a better life. Stating that it takes at least £50k to get started would soon put them off!

These schemes are often a variation of the classic 'rent to rent' scenario, where you rent an undervalued property and re-let it for more money, possibly sub-divided up into separate rooms or bedsits. These scenarios are tricky to pull off, are definitely not for beginner landlords with no money, and are often legally dubious to boot.

If you're interested in investing in property in any form, then I will tell you something truly valuable: There are no 'secrets'. Not one. There is no information that you can't get free or for next to nothing if you go looking for it.

For a start, I suggest that you join web forums like *LandlordZone* and *PropertyTribes*, and a landlord association like the NRLA. You'll find these places full of helpful friendly people.

I've been a landlord since 2007 and have seen the good, the bad and the ugly of it all, so am happy to have a chat about it... if you provide the tea and biscuits!

mark.baldwin@exp.uk.com



WILD ABOUT BOSWORTH

Lady's smock *Cardamine pratensis*

March 20th saw the vernal equinox and the first day of spring. With lengthening daylight hours, we begin to see a new crop of wildflowers brightening our green spaces. One example is lady's smock or cuckoo plant. The name cuckoo plant stems from its uncanny knack of coming into bloom just as the first cuckoo sings.

This perennial herb likes moist ground and locally favours spots close to the canal. Lady's smock belongs to the brassica family and the four petals of its pretty little flowers are white with just a hint of violet or pink. Its pinnate leaves are edible and can be used in salads. They are said to taste like watercress or English mustard. Larvae of orange tip and green-veined white butterfly also partake of its foliage. Mythologically, it's said to be a sacred plant of fairies and it is considered unlucky to bring it into a house.

Interestingly, while researching this piece, I learnt some members of this group, cabbage and broccoli, for example, contain a compound similar to phenylthiocarbamide (PTC). Depending on an individual's genetic makeup, they taste PTC as either insipid or extremely bitter. So, now I understand why some people actually like broccoli!

Mike Chanter



SULBY GARDENS

Those who supported the popular Sulby Open Gardens events, as part of the *National Gardens Scheme*, may be interested to know that a new book, *Sulby Hall and its Gardens*, detailing the history of the Hall and its gardens is soon to be published. The book is being released in *The Walled Kitchen Gardens of Northamptonshire* series.

We will hope to have more details about the launch event and date in the next *Bugle*.

Alison Lowe



WELFORD VICTORIA

Welford Victoria Football Club is inviting new members to join them. Traditionally the Club, which was founded in 1898, has had strong ties with Husbands Bosworth. Currently the club fields a Saturday Adult team, Sunday Adult team, Veterans Sunday team, an Under 16s team and an Under 8s squad. We love welcoming new players and visiting teams, and promote values of inclusion, teamwork, respect and support. We all have different reasons for playing and loving the game, and whatever you hope to get out of football, there's a place for you at Welford Victoria! If you want to play weekend matches, or just join training sessions during the week, we would love to hear from you. Please visit <http://welfordvictoria.com/join-us/> for contact details, or find us on Facebook.



HAIR BY LYNDY

AWARD WINNING HAIR
STYLIST & COLOUR
SPECIALIST

"Now welcoming
everybody to my hair
studio in Husbands
Bosworth for cuts,
colours, blow-dries &
wedding hair"



Appointment only
07852 508736

lynndy@hairbylynndy.com

FLOWERS BY HEATHER Husbands Bosworth



Flowers and floral
arrangements for any
occasion

Call for a free consultation.
Many years experience
in the floral industry.
Follow or like me on
Facebook.
Call me on 07773 063063

SCHOOL REPORT

HUSBANDS BOSWORTH C. of E. PRIMARY SCHOOL Head Teacher Alan Eathorne

We are nearly at the end of the Spring Term, and we have enjoyed some 'normal' activities returning to school life. Our fabulous *Open The Book* team have been able to come into school again to share stories from the Bible. The children enjoy watching them perform and also taking part. We are lucky to have such a dedicated group of volunteers in the village; it is the highlight of the school week!

Class 4 are visiting Norfolk Lakes this month for their residential outing. They will spend the week learning to climb, kayak and generally learning lots of life skills. They have also been learning about mountains and rivers this half term. Here is some of their writing:

The Ridge

*Water as still as a lion waiting for its prey,
Seals surrounding me like the oxygen in the air.
The peaks of the mountain are looking down on us like gods in the sky.*
Miles

The Ridge

*The calm water, like a dream,
Lake of peace, travelling to the unknown,
Journey to the mist, the wavy ride.*

Juke

The Ridge

*As ripples expanded through the lake,
A sea foam coloured boat drifted through the icy water.
The brave, skilled warrior's hair swishes in the cool breeze.*

Esmee

CRAFT GROUP

The Craft Group meets on the second Wednesday of each month in the Committee Room of the Village Hall, 7.00pm to 9.00pm.

Craft Group is a friendly and informal gathering where craft-minded people can pick up new ideas and practise their craft in a relaxed atmosphere away from the distractions of home life.

For details contact Gail on 880413.

TENNIS CLUB

Husbands Bosworth Tennis Club will be hosting the Annual General Meeting and Enrolment Evening for existing and welcoming prospective new members wishing to join the Club, on Wednesday, April 20th at the Sports Pavilion from 7.00pm.

Tennis Camp

We will be hosting a 4-day coaching camp for all age groups, April 11th to 14th. The cost is £60 for 4 days, or £20 per session.

For more information please contact George Walker on 880222

BYGONE BOSWORTH

Images from the Historical Society's Archive Collection

Husbands Bosworth parish, as we've noted before, is sadly lacking in public rights of way, only able to boast 2¼ miles of bridle track and a measly 220 yards of public footpath. So, serious walkers need to venture further afield...

On a recent dog-walk we passed by the Judith Stone in pastureland just off the public footpath from Farndon Fields Farm Shop to Marston Trussell. The Judith Stone is a glacial erratic, dropped by the retreating ice field at the end of the last Ice Age. Nobody, as far as we know, has analysed the stone, but it appears to be igneous (volcanic) and 'not from these parts'... The likelihood is that it originated in the Peak District or Charnwood in north Leicestershire and was carried here and deposited by a glacier.

It hasn't moved since, and over the millennia one can imagine herds of sabre-toothed tigers, aurochs and mammoths scratching their bums on it, which along with similar antics by more modern farm animals explains the 'ring moat' of worn earth around the base of the stone and its polished surface!

It is called the Judith Stone because of its association with Countess Judith, niece of William the Conqueror, who was given the land at the time of the Norman Conquest. In the Middle Ages, the stone was used as a mark-stone; its permanency demarcating social and political boundaries and a meeting place. Interestingly, Countess Judith also owned land here in Bosworth and the water pump on Honeypot Lane, opposite Honeypot Farm, used to draw water from a well, now under the nearby lay-by, known locally as Judy's Well.

Also close to Bosworth is the Mowsley Stone, another glacial erratic mark-stone, measuring 5ft. by 3ft., which lies in pastureland on the edge of the Laughton Hills, on the boundaries of Mowsley and Theddingworth parishes.




DONALD CAMPBELL
LANDSCAPES
Experienced in all aspects of hard landscaping, fencing and general garden maintenance.
Husbands Bosworth area
Tel. No. 07817 381 244

'JJ's Kiddycare'



- *OUTSTANDING* Ofsted grading
- * FREE Pre-school sessions for 2, 3 & 4 year olds
- * Full Day Care 0-5yrs
- Situated on a farm site between South Kilworth and Welford
- * Breakfast and After School clubs. (4-14years)
- * Holiday Clubs during all Northants & Leics school breaks

Tel no. 01858 575642
www.jjs-kiddycare.co.uk
Email: admin@jjs-kiddycare.co.uk



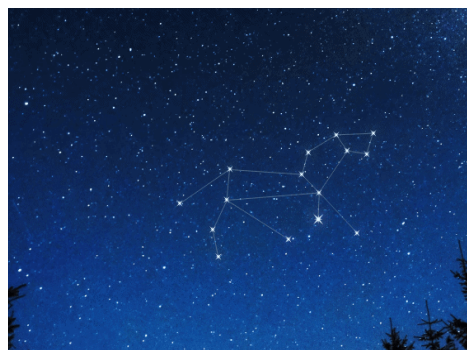
MORE BOSWORTH IN FOCUS

BOSWORTH SKY AT NIGHT

Astronomy from your Backyard - April 2022

This month we look at the spring constellation Leo, the Lion, which is south (towards Welford) at about 9.00pm. Leo is one of those constellations that looks vaguely like the mythical object it depicts, a lion leaping from left to right. The night-sky image shows the brightest stars in Leo as seen by the naked eye, the brightest of which is Regulus (des. *Alpha a Leonis*) and is one of the brightest stars in the night sky. It is 78 light years away, white to the naked eye and, like Castor in Gemini, more a star system than a single star as we see it with the unaided eye. It is a fine double star consisting of very bright Regulus *A* and faint Regulus *B*. Both being binary stars in their own right, making the star Regulus a system with four suns! The night sky is best viewed in early or late April, as the full moon in the middle of the month 'washes out' a dark sky.

Take the opportunity of the full moon, however, for great views (through binoculars or small telescope) of the craters and mountains, which show up in sharp relief along the line between light and dark.



There are also celestial fireworks this month in the form of the annual *Lyrid* meteor shower, which reaches its peak on the night of April 22nd/23rd but is visible 5 days either side of the peak, in the north-east (towards Gumley/Foxton). The Lyrids can typically produce about 18 shooting stars an hour at its peak.

Meteors, or shooting stars, are when small particles given off by comets or asteroids hit our atmosphere at enormous speed and burn up. The Lyrids happen once every year when the earth crosses the path of the debris left by long-period Comet C/1861 G1 Thatcher in its orbit around the Sun. It is the oldest recorded meteor shower still visible today and was first recorded in c.687 BC.

Next month, May: The Plough and an early morning eclipse of the Moon!

Mike Price

VILLAGE LUNCH

The next Village Lunch will be on Tuesday, April 26th at Kilworth Springs Golf Club, South Kilworth Road, North Kilworth. We meet at 12.30pm to eat at 1.00pm.

Village Lunch is a great place for those new to the area, retired or living alone to catch up with old friends and all the gossip, and make new friends in a warm and friendly atmosphere.

The cost of the two-course meal, including tea/coffee and mints is £11.50 per person.

Please call Janice on 880668 if you would like to book a place, to arrange transport to the venue or for any more information.

ART GROUP

Bosworth Art Group is a small, friendly and informal group of arty minded souls meeting on alternate Tuesday mornings, 10.00am to 12.00 in the Sports Pavilion, Kilworth Road. Meetings are on a pay-as-you-go basis, £2.50 per session to cover room hire and coffee. The group is self tutored and all mediums and skill levels are welcomed.

April dates are: Tuesdays, 12th and 26th.

For details call Melvyn on 880281.

HISTORICAL SOCIETY

The Historical Society will host an Open Evening in the Village Hall on the Wednesday, April 6th at 8.00pm, to revive the Society after the covid shutdowns and restrictions, and to introduce the Society to our new friends!

We previously held our meetings at the Sports Pavilion but for this event we will meet in the Village Hall, as there is more room to spread out there, in the present circumstances.

We will be showing a couple of films of local interest and a selection of slides from our vast digital Archive Collection. Tea, coffee and biscuits will be served in the interval. The meeting will be relaxed, informal and FREE!

We will take this opportunity to assess interest at this meeting, with the view to recommencing our usual meetings with a full Winter Programme in the autumn.

Spread the word... we look forward to welcoming past members, non-members and friends old and new!

BUGLE CRACKER

Just a thought...

Taking a dog called Shark to the beach is probably not a good idea.

BEGLEY'S
Established 50 Years
GENERAL JOINERY SPECIALISTS

Wooden Windows and Doors
Porches
Conservatories
Carpentry & Building



Free estimates
All items can be viewed at Shearsby Workshop

Tel: **0116 2478755** (day)
01858 880569 (eve)
Email: andybeg@hotmail.co.uk

Springfields

Food to Go

In Store Bakery

National Lottery

Newsagents

Groceries

Fresh Meat

Fruit & Veg

Wines, Spirits & Beers

Fresh Dairy Produce

Non Grocery Items

Post Office

ATM

HIGH STREET HUSBANDS BOSWORTH
Opening times:
6.00am - 9.00pm
7 days a week
FREE to use Cash Dispenser

National Lottery

COMPLETE CAR CARE

Accident repair specialist

Bodywork, dent, scratch and stone-chip repair
Servicing, alloy refurbishment, welding

MoT repair

Valeting, full body polish

Parking sensors, tyres & exhausts, etc. fitted

Call Ben on 01858 880404

bencompletecarcare@outlook.com

PARISH COUNCIL NEWS

Report of the Parish Council Meeting held on Tuesday, March 1st 2022.

Present: Full Council and one member of the public.

The meeting welcomed Councillor O'Connor as a co-opted member

Visitors Questions

□ The visitor raised a concern regarding the dangerous position of his shed on the allotments, following the recent high winds. Clerk agreed to arrange for volunteers to assist in safely returning the shed to the correct allotment and to the upright position.

Minutes

□ Minutes of the previous meeting were approved and signed by the Chair.

Matters Arising

□ Clerk confirmed that a second quote for CCTV security at the Pavilion had been received.

□ It was confirmed that the repair work to the Cemetery wall had been completed.

□ Clerk confirmed that he had advised the successful contractor in relation to the required work on the Pavilion hedge.

□ Clerk confirmed Platinum Jubilee mugs for village school children had been ordered.

□ One quote from an architect had been received in relation to possible developments at the Sports Pavilion and a second quote was currently being sought.

Finance

□ February 2022 Bank Statements and Cashbook reconciliation were presented for review.

Planning Overview

□ The January/February planning application summary was presented and approved.

Skate Park Update

□ Two Councillors had visited a skate park near Milton Keynes, which has composite surfacing and one with a concrete surface in order to judge the merits of both systems. Clerk presented quotations and design options for consideration, including cost, and after discussion Council agreed to proceed with the composite surfacing option. Clerk to submit the appropriate grant funding application.

Platinum Jubilee

□ Council noted Harborough District Council's Platinum Jubilee Community Capital Fund, which will allocate funding for small projects relating to the jubilee. Council agreed to apply for a grant to add a second bench and for 6 memorial trees to be planted in the Dog Walk.

□ A meeting will take place on Wednesday 9th March at the Sports Pavilion with interested parishioners and organisations to explore what ideas and opportunities are available to celebrate the Platinum Jubilee in Husbands Bosworth.

Annual Parish Meeting

□ The Annual Parish Meeting will take place on Tuesday, 5th April 2022 at 7.30pm. District Councillor Amanda Nunn, County Councillor Blake Pain, representatives from Leicestershire County Council, representatives from local and county organisations and from ongoing local projects are to be invited. The Annual Parish Meeting will be followed at 8.00pm by the Ordinary Parish Council Meeting. Potential invitees were discussed

Parish Tree Survey

□ Clerk summarised the main results of the recent tree survey, which only highlighted a few priority actions. A full copy of the Survey is available to view at the Parish Office.

Any Other Business

□ It was noted that the emergency light cover to the rear of the Pavilion is missing. *Fireserv UK* would be asked to repair this if possible when carrying out work relating to the Annual Service.

□ Signs to be prepared for the Pavilion reminding users to ensure the equipment is left clean after use following problems after recent external hire of the facility.

□ A damaged slab to the front of the Pavilion was noted. Caretaker to be asked to check for safety issues.

Next Meeting

□ The Annual Parish Meeting will be held on Tuesday 5th April 2022 at 7.30pm, followed by the Ordinary Parish Council meeting at 8.00pm.

A full copy of the Minutes can be viewed or downloaded at: www.husbandsbosworthpc.org.uk or by request to the Parish Clerk.

SID REPORT

Readings from the Speed Indicator Device

Theddingworth Road

Period: 16.02.22 - 23.02.22

Vehicle movements: 10655 Av./day: 1522

Average speed: 30.21mph

Highest recorded speed: 55mph

Theddingworth Road

Period: 23.02.22 - 02.03.22

Vehicle movements: 11060 Av./day: 1670

Average speed: 30.18mph

Highest recorded speed: 56mph

Leicester Road

Period: 02.03.22 - 09.03.22

Vehicle movements: 6065 Av./day: 866

Average speed: 33.17mph

Highest recorded speed: 64mph

Leicester Road

Period: 09.03.22 - 16.03.22

Vehicle movements: 5996 Av./day: 856

Average speed: 33.10mph

Highest recorded speed: 57mph

LOCAL OFFICERS

Husbands Bosworth Parish Council:
Councillors

Patricia Hobson (Chair) 880070

William Fletcher

Melvyn Forman

Jackie Fletcher

James Bolter

Heather O'Connor

Parish Clerk

Derek Watson

2a Mowsley Road

H.B. LE17 6LR Tel: 881109

clerk@husbandsbosworthpc.org.uk

District Councillor

Amanda Nunn

a.nunn@harborough.gov.uk

County Councillor

Blake Pain

Tel: 01858 411021

blake.pain@leics.gov.uk

Member of Parliament

Neil O'Brien

Tel: 0207 2191802

neil.obrien.mp@parliament.uk

F&W Plumbing & Heating Services Ltd

Based in North Kilworth

- Bespoke bathroom & kitchen design and installation
- All types of wall and floor tiling
- Hot and cold water systems
- Unvented hot water systems

Contact Jason on 07866741261

Email: jasonfandw@hotmail.com

www.fandwplumbingandheatingservices.co.uk

Over 30 years experience in designing and installing contemporary and traditional kitchens and bathrooms
Project manage personally with all associated trades for a co-ordinated high quality finish with minimum disruption



Totally Trees Ltd

Pruning - Felling
Stump removal

Hardwood logs
Kindling

01455 554182 info@totallytrees.co.uk



Tree Surgery



TRUSTMARK
Government Endorsed Quality

CHURCH NEWS

All Saints Parish Church & St. Mary's Roman Catholic Church

ALL SAINTS CHURCH NEWS

LENT - An MoT for Body and Soul

Christian Church is now in the period of Lent; six weeks leading up to Easter - the high point of the Christian year. Lent is a complicated time. How do you get yourself ready to celebrate the betrayal, torture, death and resurrection of your God? As we move towards Easter there is the horror of the betrayal and Jesus torture and death on Good Friday, the confusion, despair, and desolation of Easter Saturday. Then, on Easter Sunday we celebrate the joy, wonder and glory and the resurrection of Jesus as king and conqueror of sin and death and hell.

How do you put all that together in one set of emotions? How do you get yourself ready to celebrate something like that? The Christian answer for 2,000 years has been to look long and hard at ourselves. To hold a mirror up to our thoughts, words, actions, and deepest motivations and ask ourselves the question, "What kind of a response to Jesus is my life?" To help us we try to make more room for God in our lives - denying ourselves some of our pleasures, putting more effort into our spiritual practices and making a greater effort to be generous and kind towards the needy.

Is that a good way to prepare yourself for the complexity of Easter? Well, at least it sounds like the kinds of things Jesus would approve of! Whatever you do personally decide to do for Lent, I pray that it will be a great blessing to your soul...

On another subject, last week I joined with Fr. Matthew Pittam of St Mary's Roman Catholic church and we walked around Husbands Bosworth praying God's blessing on the village. It was wonderful being united in prayer.

We felt it was so important, that we have decided to do it each month! We thought it would be great to invite all Christians and people who pray to join with us. So on Thursday, May 12th from 10.00am to 12.00pm we invite you to join us as we walk around our village praying God's protection and blessing. Meet us outside All Saints Church.

Stephen ✠

ST.MARY'S NEWS

There is lots going on at St Marys in April!

SUNDAY MASS continues to be celebrated each week at 11.00am and is well attended. It is good to see villagers and those travelling from further afield.

14th April Maundy Thursday 7.30pm Mass of the Lord's Supper

15th April Good Friday 2.00pm Liturgy of the Day

16th April Holy Saturday 8.00pm Easter Vigil

17th April Easter Day 11.00am Mass

We are also planning a Stations of the Cross service – see website for dates.

A RECITAL FOR SPRING Mia, a finalist in the *BBC Chorister of the Year*, will be performing a recital at St Mary's on 22nd April at 7.00pm. Tickets available from Fr. Matthew or at the Church. All welcome.

COFFEE AFTER MASS Each week we go either to the Old Stables at Kilworth House or The Gliding Centre for Coffee.

RECEPTIONS AND CONFIRMATION Two adults are being Confirmed on Easter Sunday. We look forward to joining them on this special day.

Father Matthew ✠



INMAN HALL BUILDING & PLASTERING
FINE BUILDING AND PLASTERING SERVICES

- RENOVATION
- EMERGENCY REPAIRS
- ROOFING
- EXTENSIONS
- BUILDING MAINTENANCE
- PLASTERING

CALL GRAY INMAN-HALL : 07938217578
OR EMAIL : INMAN-HALLBUILDING@HOTMAIL.COM

✠ CHURCH SERVICES ✠

Hexagon Benefice

3 rd April	10.30am Mowsley
10 th April	PALM SUNDAY 10.30am Shearsby
17 th April	EASTER SUNDAY 10.30am B'thorpe
24 th April	10.30am Thedd.

All Saints Church invites you to an informal, warm and friendly mid-week communion every Wednesday 10.00am

Senior Churchwarden:

Di Jones 880741

Curate:

Stephen March

Stephen.March@LeicesterCofE.org

St Mary's Roman Catholic Church

Contact:

Robert Constable-Maxwell 880361

Fr. Matthew Pittam 01788 833547

E:matthewpittam@yahoo.co.uk

FANTASTIC FOODBANK

Thank you so much to everyone who supported the collection for the Foodbank at Lutterworth. A fantastic total of 136kg of items were collected.

Many thanks to Samantha Bell who organised this and took a very full car load to Lutterworth!

All Saints will have another collection on Friday, June 24th. Please put it in your diaries!

Di Jones

JUBILEE FLOWER FESTIVAL

Saturday, 28th & Sunday 29th May

Anyone who would like to put a Jubilee themed flower display in Church for this special colourful event, please contact me.

We are also hoping to have a Jubilee Themed Village Trail, similar to our Christmas Trail. So, get your thinking caps on... and decorate your front garden or window on a Jubilee theme. Prizes for the best entries.

There will be a form with further details in the next *Bugle*. For further information please contact Di Jones 880741



Armouredgeddon
Military Museum
One of the Largest Collections of
WWII Vehicles and Militaria in the Midlands.

Our under cover collection includes post war vehicles, Main Battle Tanks, as well as an excellent selection of other American, German and British vehicles. With interactive displays and lots of things to see. Visit on a game day (Saturday, Sunday or selected Wednesday—April to October) and you will get to see some of our vehicles driving around.

01858 880 239

Chat to us Online
www.armouredgeddon.co.uk

Office hours Monday to Friday 0900hrs—1700hrs

FORTHCOMING EVENTS

Tuesday April 5 th	Parish Council Annual General Meeting & Ordinary meeting, 7.30pm Sports Pavilion
Friday, April 8 th	Causeway Coffee Morning, 10.00am - 11.30am, Pavilion
Sunday April 10 th	Village Litterpick, 9.00am Meet on The Green
Sunday, April 10 th	Spring Fair, Village Hall
Tuesday, April 12 th	Art Group, 10.00am - 12.00pm Sports Pavilion
Wednesday, April 13 th	Jubilee Planning Meeting, 7.30pm Sports Pavilion
<i>NOTE: There will be NO Mobile Library in April because of Easter Holidays</i>	
Sunday April 17 th	EASTER SUNDAY
Wednesday, April 20 th	Tennis Club AGM & Enrolment Evening, Sports Pavilion from 7.00pm.
Tuesday, April 26 th	Art Group, 10.00am - 12.00pm Sports Pavilion
Tuesday April 26 th	Village Lunch, 12.30pm for 1.00pm, Kilworth Springs Golf Club
Thursday, May 12 th	Street Prayers with Stephen and Matthew. 10.00am All Saints Church
Saturday 21 st May	FOBS SAFARI SUPPER
Sat. & Sun May 28 th /29 th	All Saints Jubilee Flower Festival
June 2 nd - 5 th 2022	HM The Queen's Platinum Jubilee 4 day holiday weekend
Friday, June 24 th	All Saints Foodbank Collection
Sunday, August 7 th	Horticultural & Craft Show
August 13 th - 27 th	Women's World Gliding Championships, Gliding Centre

LOCAL PLANNING NEWS

The following applications have been submitted to Harborough District Council:

- 22/00600/FUL Erection of triple garage with loft space with dormer windows to front and rooflights to rear, Walton Lodge, Leicester Road
- 22/00638/FUL Erection of a front porch and single storey extension to side, 17 Highcroft
- 22/00687/TPO Works to trees (*HDC TPO 198*), 26 Welford Road

Recently determined applications:

- 22/ 00118/TCA (*Approved*) Works to trees, 21 Berridges Lane
- 22/00149/TCA (*Approved*) Works to trees (fell), Holly Edge, Berridges Lane

Current applications may be inspected during normal working hours at the Council Offices, The Symington Building, Adam & Eve Street, Market Harborough.

Planning applications and other aspects of local government can now be viewed on-line at www.harboroughonline.co.uk

MOBILE LIBRARY

Stops & Times

School, Welford Road: 10.25am - 11.25am

Berridges Lane: 11.30am - 12.10pm

Butt Lane: 12.15pm - 12.50pm

For help with the service or if you have any questions, please call 0116 305 2695 or email libraries@leics.gov.uk

PLEASE NOTE: There will be no Mobile Library visit in April due to Easter holidays.



LanGuard
Vegetation Management

Safeguarding the Environment

All aspects of vegetation management, landscape maintenance and weed control

Urban, highway, sports, industrial and domestic

LanGuard Ltd • Packs Hill Farm • Station Road • Husbards Bosworth • Lutterworth • Leicestershire • LE17 6JN

Tel: 01858 880 898 • Fax: 01858 880 720

Email: info@languard.co.uk

MARIE AINGE

PHOTOGRAPHY

Local photographer offering various types of images, including children and pet portraits, etc... Indoor or outdoor settings.

Introductory offer price £55

You keep all images

View at: [Flickr.com](https://www.flickr.com/photos/kittenchops21/)

Contact 01858 880823

Email: kittenchops21@gmail.com





BOAT LIFT

£1.00 off Museum Entry

For ALL adults with this voucher

Children FREE / Dog friendly

Foxton Canal Museum: valid until 31/12/22

How does a Canal boat go "UP" a hill?

First they built a Staircase.....and then they built a Boat Lift.



Visit us to find out more about your remarkable local history at Foxton Locks

www.foxtoncanalmuseum.org