

HEART FELT

Husbands Bosworth Parish Council have recently commissioned a new community defibrillator.

Generously funded by the family of the late Sue Peace of Wheler Cottages, as a lasting memorial to Sue's life, the life-saving device has been sited on Honeypot Lane in the village.

Located at the eastern end of the village, the device will compliment similar defibrillators in the centre of the village on The Green, and at the Sports Pavilion on the Playing Field.

TAX BRAKE

Harborough District Council Cabinet has recently made recommendations on its budget priorities for 2024/25, with proposals to freeze the Council's portion of Council Tax this year from April, thereby maintaining a Band D property at the same level since 2022/23 (£177.97).

It also proposes to freeze green waste bin charges and car parking charges across the district and has committed to repeating last year's free car parking on Saturdays during the month of December.

This largesse on behalf of the Council has been made possible by 'new' income from business rates from recently commissioned warehousing and distribution parks that have come on-line during the past year within the district, along with government grant that recognises housing growth has given the Council the financial leeway to afford these proposals.



WASTE LINE

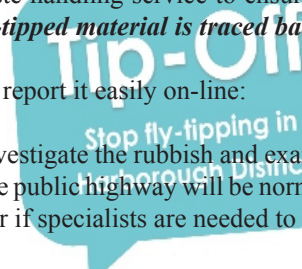
As we move into the season of home improvements Harborough District Council are reminding us to be sure to employ a reputable waste handling service to ensure the lawful disposal of your waste. ***Be aware that if fly-tipped material is traced back to you it will be you that is prosecuted...***

If you come across incidents of fly-tipping you can report it easily on-line:

www.harborough.gov.uk/tipoff.

Do not remove any items from a fly-tip - we will investigate the rubbish and examine any evidence found. Fly-tipping on public land or the public highway will be normally cleared within 14 working days but may take longer if specialists are needed to clear hazardous waste, such as asbestos.

Note: Fly-tips on private land are the responsibility of the landowner.



TRANSPORT PLAN

Welford Action Group, the volunteer group that campaigns on HGV traffic issues along the A5199 corridor through Husbands Bosworth and Welford, has long been pressing the operators of Bruntingthorpe Vehicle Storage facility to more rigidly enforce their designated traffic routing plan.

Some time ago the group arranged for villagers to report movements of car transporters through our villages by email: tptcomplaints@bruntingthorpe.atlassian.net, noting time and registration number of the offending vehicle.

Recently, Cox Automotive Ltd., which oversees the car storage and refurbishment operation at the site, have agreed to look into improving signing for transporters leaving the storage site and travelling south, directing them away from the A5199 along Pincet Lane to the motorway system.

Environmental Grant Scheme

Not for profit organisations can now apply for the Environmental Grant Scheme!

The grant will support communities across the Harborough District to engage in capital projects that will have a positive and provable impact on the environment.

Eligible projects must meet one or more of the following outcomes:

- Reduce the carbon footprint of the community
- Reduce the waste produced in the community
- Create, or protect and enhance, biodiversity or environmental assets such as green spaces and waterways
- Educate and/or raise awareness of climate change that will result in one of the above outcomes

Grant value: Minimum £5k - Maximum £20k

Find out more:
www.harborough.gov.uk/environmentalgrant

Drivers travelling to and from Bruntingthorpe Proving Ground must use the designated route as defined by Planning Authorities.

Use A14 - M1 - A4304

No access for these vehicles through Welford and Husbands Bosworth.

Traffic for Bruntingthorpe Proving Ground

ALL drivers must use A14 - M1 - A4304

No access through Welford or Husbands Bosworth

BUGLE POSTBAG

From Graham Peace, Welford Road

[Graham and family generously funded the new defibrillator, that has been sited on Honeypot Lane in memory of wife and mother, Sue Peace.]

Sue first came to Bosworth in 1998 when Graham's firm transferred him to the Midlands. With young daughter Gemma, Sue was smitten on turning off Welford Road to look at the house prior to buying it. It ticked three of Sue's boxes... countryside, wildlife and a large garden.

Sue soon got to know some of the other mums on the school run. She was happy to help out where necessary, such as taking pupils to netball matches, and sometimes helping in the school library.

Sue was modest to a fault, but was fiercely loyal to her friends and regularly met with old friends with whom she worked at Dingley Lodge and kept in touch with some of her former Age Concern clients after she retired.

The two main loves of Sue's life were her family and animals, especially cats and horses. She was in her element helping to look after neighbours pets. The three cats Graham now cares for were once feral cats that succumbed to Sue's charm.

A lifelong supporter of many animal charities, especially Cats Protection and PDSA, Sue was delighted when she was able to feed the giraffes at Twycross as a birthday treat with Graham, Gemma and son-in-law Adam.

A wonderful lady, Sue sadly passed away in September 2022. She is greatly missed by all who knew her.

From Janice Staples, Honeypot Lane

The PINK book box in Honeypot Lane has finally disintegrated BUT has been replaced by a BLACK box so it is still business as usual... Happy Reading everyone!

THE BUGLE TEAM

Editor:

Melvyn Forman

10 Church Lane

Tel: 880281

Email: m.forman@talk21.com

Treasurer & Advertising:

Ralph Horton

18 Highcroft

Tel: 880526

Contacts:

Mike & Sylvia Price

3 Highcroft

Tel: 880902

Jo Horton

18 Highcroft.

Tel: 880526

Frances Smith

10 Butt Lane

Tel: 880225

Penny Mattock

9 Fernie Court

Tel: 881140

Heather O'Connor

16 Fernie Court

Tel: 880165

Postal Subscription & distribution:

Melvyn Forman

Tel: 880281

Email: bosworth_bugle@talk21.com

www.husbandsbosworth.info

COPY DEADLINE

15th OF THE MONTH

PRECEDING PUBLICATION

POLICE FILE



To contact your Dedicated Neighbourhood Team (DNT) online, use the quick and simple online contact tool - Search *Lutterworth Police*. You will be asked a few questions to make sure your query gets to the right place.

LUTTERWORTH BEAT SURGERIES

March

Sunday, March 10th, 12.00pm - 1.00pm

Ullesthorpe Garden Centre, Bitteswell Road, Ullesthorpe

Friday, March 22nd, 12.00pm - 12.30pm

Town Hall, High Street, Lutterworth

We have been conducting speeding checks and dealing with road safety matters across the beat. Recently the road safety camera van has been operating on High Street, and Kilworth Road, Husbands Bosworth and Station Road, North Kilworth. Eight offences were logged over the three locations.



POLICE FILE

Market Harborough & Lutterworth Police

Dedicated Neighbourhood Team

Insp. Liz Perry

Sgt. Charlie Davies

PC James Day

PC Jason Rainbow

PCSO Alexander Caswell-Jones

PCSO Steve Adams

Market Harborough Police Station,

Fairfield Road,

Market Harborough,

0116 222 2222

harboroughandwigston.npa@leics.police.uk

CRIMESTOPPERS:

0800 555111

ACTION FRAUD:

www.actionfraud.police.uk

0300 123 2040

COMPLETE CAR CARE

Accident repair specialist

Bodywork, dent, scratch and stone-chip repair

Servicing, alloy refurbishment, welding

MoT repair

Valeting, full body polish

Parking sensors, tyres & exhausts, etc. fitted

Call Ben on 01858 880404

bencompletecarcare@outlook.com

FLOWERS BY HEATHER

Husbands Bosworth



Flowers and floral arrangements for any occasion

Call for a free consultation.

Many years experience in the floral industry.

Follow or like me on Facebook.

Call me on 07773 063063

BOSWORTH IN FOCUS

ACTIVITY & INTEREST GROUPS

Art Group

Contact: Melvyn Forman 880281

All Saints Parish Church

Contact: Diana Jones 880741

Causeway Charity

Contact: Heather O'Connor 880165

Craft Group

Contact: Gail Wilmot 880413

Badminton Club

Contact: Ralph Horton 880526

HB School

Contact: Office 880212

Historical Society

Contact: Melvyn Forman 880281

Millennium Woodland Trust

Contact: Jackie Fletcher 880910

Parish Council

Contact: Derek Watson 881109

St. Mary's Roman Catholic Church

Contact: Matthew Pittam 01788 833547

Tennis Club

Contact: George Walker 880222

Village Lunch

Contact: Jo Hutton 07534 057575

BOOKINGS

Village Hall

Liz Linnell-Jones: 07766022901

01858 880426

Sports Pavilion & Playing Field

Patricia Hobson 880070

WILD ABOUT BOSWORTH

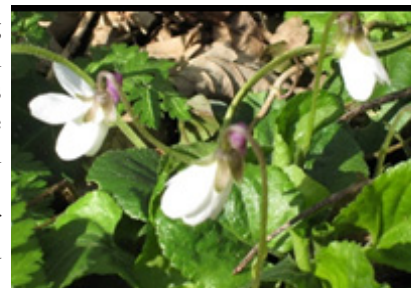
Sweet or Dog Violets - *Viola Odorata* or *Viola Riviniana*

This month I start with a confession! Every spring I've noticed the violets growing alongside the path between the canal and Leicester Road and it was only when I came to research these attractive little flowers, that I discovered there are two common varieties: Dog and Sweet violets.

Both have blue-violet and white forms, and flower from March to May, both favour woodland edges and both have heart-shaped leaves.

Sweet violets do have two distinguishing features that dog violets lack. Firstly, like strawberries, they grow stolens (runners). Secondly, sweet violets have a pleasant scent, whereas dog violets are unscented. However, there is a caveat; soon after smelling a sweet violet its scent disappears! In truth, the scent is just as strong - the problem is due to a quirk of violet perfume which is based on an aromatic compound known as beta-ionone. When ionone binds to scent receptors, it momentarily inhibits the olfactory system. As the receptors recover, normal service is resumed and the scent is detectable again, albeit temporarily.

In the language of flowers, (floriography), violets signify 'Modesty', 'Humility' and 'Innocence', leading to the tradition of violet posies being given as tokens to newlyweds. Sweet violets are edible and are sometimes used to decorate and flavour puddings. Although care is needed as the roots and seeds are toxic. They are also used in the perfume industry and in medieval times as a household deodorant.



Ecologically, violets are a favourite host plant of fritillary butterflies and, happily, they are widespread across the UK, commonly growing in woods and hedgerows. However, they are becoming less common, possibly due to over-picking.

Postscript, I'll check to see whether those growing locally are of the "Sweet" or "Dog" variety and report back next month.

Mike Chanter

SCOUTING FOR BOSWORTH

The 1st Kilworth Scout Group as a whole have kicked off 2024 with a fantastic start! The Beavers have welcomed a handful of new starters and have enjoyed a visit to a local farm to hand feed some lambs. Cubs glided (and teetered) into the year at the District Roller Skating event at the Midlands Roller Arena, Ashby Parva. The Scouts have made Energy Balls to fuel their young minds, mixing together bananas, maple syrup, oats and other delicious ingredients.

We are holding a fund raising event on Saturday, March 2nd from 10.00am – 1.00pm. You are invited to the Scout Hut, Husbands Bosworth to our Book Sale. We will have a generous amount of good quality, second hand books, of all genres, for sale. All money raised will go towards enhancing the opportunities that the young people can be offered during their time in Scouting. Hot drinks will also be available for 50p each when you buy a book. A cup of tea and a new book at bargain prices – the perfect start for your weekend!

Are you a carpenter? Do you know a carpenter? We are on the lookout for a local carpenter to help us replace the front door of the Scout Hut. The door is worse for wear and is the next large project that needs addressing before it becomes ineffective. Please reach out to us if you can help by email: kilworthbeavers@gmail.com

Louise Hepworth, 1st Kilworth Scout Group



LanGuard
Vegetation Management

LanGuard VM Safeguarding the Environment

All aspects of vegetation management, landscape maintenance and weed control

Urban, highway, sports, industrial and domestic

LanGuard Ltd • Packs Hill Farm • Station Road • Husbands Bosworth • Lutterworth • Leicestershire • LE17 6JN

Tel: 01858 880 898 • Fax: 01858 880 720

Email: info@languard.co.uk



BESPOKE
PROPERTY RENOVATIONS



JLR Bespoke Property Renovations are an experienced and trusted Project Management and Construction team based in North Kilworth, Leicestershire.

If you have a project or idea in mind, please don't hesitate to contact us either by phone or via our website.
Tel: 07846 741 261 (Jason Wright)
www.jlrbespokeproperties.com



SCHOOL REPORT

HUSBANDS BOSWORTH C. of E. PRIMARY SCHOOL Head Teacher Alan Eathorne

Husbands Bosworth CE Primary School KS2 after-school art club recently explored a new avenue of art... blow painting!

We mixed up some watercolours, dropped paint onto card then used straws to blow the paint in all directions. Some of the children used this technique for abstract pieces,



some for crazy hair styles on characters, some for flowers and landscape backgrounds, and we even had a moth, too! All the paint was applied to the card and 'styled' by blowing, but by using pens, pencils and markers they could then add any detail that they wanted.

Super fun, and super messy... and an important lesson in exploring new ways to paint and to make art.

Lois Pedley Art

BYGONE BOSWORTH

Images from the Historical Society's Archive Collection

The day after the night when Jerry came knocking on Bosworth's door...

The *Harborough Mail & Advertiser* report at the time was characteristically dismissive of the incident, and brushed off the close shave with the Luftwaffe as a sneak bombing raid. The bomb, which fell in the gardens at the rear of Bosworth House, buried itself in the soft ground. The only damage recorded was a cracked drawing room ceiling in the house, 25 yards away from where the bomb dropped.

The Air Raid Precautions (ARP) Civil Defence report notes two stray bombs in this 'stick' dropped in November 1940, probably hastily jettisoned bombs 'hung up' in the bomb bay of a German bomber returning from one of the intense bombing raids over Coventry.

In the picture we see the village police constable, PC George Gilbert, the Bosworth House butler and Fred Moss, the chauffeur, investigating the crater.



FOBS NEWS



Friends of Bosworth School

**SAFARI
SUPPER**

Sat 18th May 2024

Bosworth

BINGO
Night



**SAVE THE
DATE**

**SATURDAY
20th April**

**SAVE YOUR CLEAR
OUT FOR FOBS!**

**BAG 2 SCHOOL
CLOTHING COLLECTION
RETURNS IN APRIL**

F&W Plumbing & Heating Services Ltd

Based in North Kilworth

- ❑ *Bespoke bathroom & kitchen design and installation*
- ❑ *All types of wall and floor tiling*
- ❑ *Hot and cold water systems*
- ❑ *Unvented hot water systems*

Contact Jason on 07866741261

Email: jasonfandw@hotmail.com

www.fandwplumbingandheatingservices.co.uk

Over 30 years experience in designing and installing contemporary and traditional kitchens and bathrooms

Project manage personally with all associated trades for a co-ordinated high quality finish with minimum disruption

NEIL BURKE JOINERY

*Supporting
the
Bosworth Bugle*



MORE BOSWORTH IN FOCUS

HISTORICAL SOCIETY

The next meeting of the Historical Society will be on Wednesday, March 6th when we will be welcoming Stephen Evans, who will be outlining the history of the Great Central Railway and their ambitious re-unification project.

The project aims to reconnect the Leicester North to Loughborough section of the preserved Great Central Railway with the isolated northern section to Ruddington, near Nottingham.

The Great Central Railway was the last mainline railway to be built... and became the first to close.

Futuristic in its aims, the railway was built as a highspeed line, and to European standards, the Great Central was intended to link the English railway system to the Continent through a proposed tunnel under the Channel. However, the line never realised its potential and closed after a little over 60 years.

Thankfully a volunteer-led group was soon formed with the aim of preserving a viable section of the line, running locomotives and rolling stock as a living memorial.

The meeting starts at 7.30pm in the Sports Pavilion, Kilworth Road and is open to members, friends and visitors. Tea/coffee and biscuits served after the meeting.

A door-charge of £2.50 is requested of non-members.

Melvyn Forman

CRAFT GROUP

The Craft Group meets on the second Wednesday of each month in the Committee Room of the Village Hall, 7.00pm to 9.00pm.

This is a friendly and informal gathering, where craft-minded people can pick up new ideas and practise their craft in a warm and relaxed atmosphere, away from the distractions of home life.

For more information please contact Gail on 880413.

ART GROUP

Bosworth Art Group is a small, friendly and informal group of arty minded souls meeting on alternate Tuesday mornings, 10.30am to 12.30pm in the Sports Pavilion, Kilworth Road. Meetings are on a pay-as-you-go basis, £2.50 per session to cover room hire and coffee/biscuits.

The group is self tutored and all mediums and skill levels are welcomed.

Art Group dates for March are: Tuesdays, 5th and 19th.

For details call Melvyn on 880281.

Please note that we now start a bit later at 10.30am.

CAUSEWAY COFFEE

The next Causeway Coffee Morning will be on Friday, March 8th 10.00am - 11.30am. Causeway Coffee meetings are held on the second Friday of each month in the Sports Pavilion, Kilworth Road.

Meetings are open to any villager who is retired and living alone - come along for a coffee/tea and a chat with friends.

For more information please contact Heather on 880165.

CANAL FRIENDS

Friends of the Welford Arm

The group have been very productive recently, clearing and laying another section of the hedge below the lock.

Our regular work party will be on Saturday, March 2nd - meet at the wharf at 9.30am. In order to avoid disturbing nesting birds, we will have a general tidy up around the newly laid hedge and the lock.

It will help if you could let us know if you intend to join one or both of the work parties.

Email: friendsofthewelfordarm@gmail.com

Work party diary:

March 2nd

April 6th

Market Harborough
Charitable Foundation

FRIENDS
OF THE
WELFORD
ARM



VILLAGE LUNCH

The next village lunch will be on Thursday March 28th at the Kilworth Springs Golf Club, South Kilworth Road, North Kilworth. We meet at 12.30pm to eat at 1.00pm.

The Village Lunch is a great place for those new to the area, retired or living alone to meet up with old friends, catch up with all the local gossip and make new friends whilst enjoying an excellent home cooked meal in a relaxed and friendly atmosphere.

The cost of the two-course meal including tea/coffee and mints is £13.50 per person. All dietary needs are catered for, please ask for details.

Please call Jo on 07534057575 if you would like to book a place, arrange transport to the venue or for any other information.

Next month's Village Lunch date:

Tuesday, April 30th

WELFORD CINEMA

Saturday, March 3rd 7.30pm

Welford Village Hall

My Sailor My Love (2022)

A retired sea captain and his daughter must reassess their strained relationship after he begins a new romance with a widowed housekeeper.

Well worth coming along just to see the stunning Irish scenery!



MARIE AINGE PHOTOGRAPHY

NPhoto Magazine Issue 160

Hi all a quick update from me!

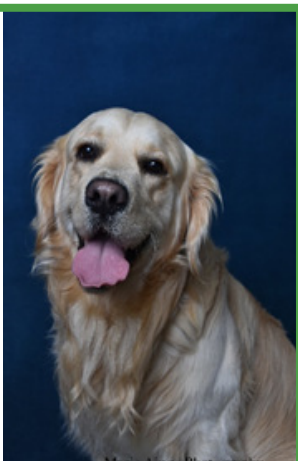
NIKON mag have done a 3 page feature story on this local girl - me!!

Local Photographer taking bookings. Prices are £55 per session

Facebook

Flickr.com Contact 880823

Email: aingel1@sky.com



Tash the Barber
07899 951537

Mobile Barber
Husbands Bosworth
&
Local Villages

PARISH COUNCIL NEWS

Report of the Parish Council Meeting held on Tuesday, 6th February 2024.

Present: Full Council and 2 visitors

Visitors' Questions

- ☐ One visitor came to thank the Clerk and Parish Council for their support in the process to site a defibrillator on Honeypot Lane, which was donated in memory of his late wife
- ☐ The second visitor attended to outline proposals for restoring All Saints Church clock face. *[A donation request received from the PCC was an agenda item for this meeting.]*

Minutes of previous meeting

- ☐ Council received and approved the minutes of the previous meeting and the 2024-25 Precept Meeting

Matters Arising

- ☐ Clerk advised that he was waiting for approval to site 'Pick up dog waste' for Butt Lane bridleway
- ☐ Clerk advised that the process to move Council's banking had been started
- ☐ The clearance of the last barn at Firs Farm is awaiting EA approval

Finance

- ☐ Bank Statements, Cashbook Reconciliation, Bank Reconciliation for December 2023 and January 2024 were presented for noting

Standing Orders

- ☐ Following review, the revised Standing Orders were approved and accepted

Millennium Pavilion

- ☐ Carpark/pavement lighting - Clerk advised that he understands Statom have placed the order for three solar lights
- ☐ A quotation for the installation of the lights was accepted
- ☐ Pavilion furniture - after discussion it was agreed to order 27 new chairs. A decision on tables was deferred
- ☐ A quotation for installation of a waste bin base and bench at the Sports Pavilion was accepted

Parish Maintenance

- ☐ A quotation for weed spraying around the Scout Hut in March and September was accepted
- ☐ A quotation for hedge work at the cemetery before the bird nesting season was accepted

Parish Office

- ☐ New laptop - After review of options, it was agreed to purchase of a new laptop for the parish office
- ☐ Electricity Contract - Clerk advised that the existing energy supply contract is due for renewal in May. Clerk was asked to seek quotations to be discussed at the next meeting
- ☐ Parish Council Website - a recent notification advised of changes to the PC website hosting arrangements. It was agreed to seek further information on available options to bring to the next meeting

Church Clock

- ☐ Council agreed that the church clock is a community asset and agreed to make a donation towards the refurbishment of the clock face

Old Green

- ☐ Council discussed the correspondence received in relation to the Coronation Oak tree on the Old Green and agreed a response

Neighbourhood Plan

- ☐ Council noted that a review of Neighbourhood Plan, made in 2019/20, is advised. Councillors were asked to appraise the existing Plan and feedback any comments or observations at the next meeting

Planter Adoption

- ☐ It was agreed to wait until spring before any work would be carried out to replant the street planters to see what existing plants will appear

D-Day 80th Anniversary

- ☐ It was agreed that the beacon would be lit on June 6th as part of a national memorial event

Any Other Business

- ☐ Clerk confirmed that mole activity on the Playing Field had been dealt with
- ☐ Council noted muddy paths around the Pavilion following sports events over the weekend

Date and time of next meeting Tuesday 5th March 2024 at 7.30pm in the Sports Pavilion

A full copy of the Minutes can be viewed or downloaded at: www.husbandsbosworthpc.org.uk or by request to the Parish Clerk.

LOCAL OFFICERS

Husbands Bosworth Parish Council: Councillors

Patricia Hobson (Chair) 880070
James Bolter
Melvyn Forman
Gareth Peel
Kay Gallagher
Thomas East

Parish Clerk

Derek Watson
2a Mowsley Road
H.B. LE17 6LR Tel: 881109
clerk@husbandsbosworthpc.org.uk



MILITARY VEHICLE DRIVING AND TANK BATTLES AT
ARMOURGEDDON
Military Museum
One of the Largest Collections of
WWII Vehicles and Militaria in the Midlands.

Our under cover collection includes post war vehicles, Main Battle Tanks, as well as an excellent selection of other American, German and British vehicles. With interactive displays and lots of things to see. Visit on a game day (Saturday, Sunday or selected Wednesday—April to October) and you will get to see some of our vehicles driving around.

01858 880 239 Chat to us Online
www.armourgeddon.co.uk

Office hours Monday to Friday 0900hrs—1700hrs



INMAN HALL BUILDING & PLASTERING
FINE BUILDING AND PLASTERING SERVICES

- RENOVATION
- EXTENSIONS
- EMERGENCY REPAIRS
- BUILDING MAINTENANCE
- ROOFING
- PLASTERING

CALL GRAY INMAN-HALL : 07938217578
OR EMAIL : INMAN-HALLBUILDING@HOTMAIL.COM

CHURCH NEWS

All Saints Parish Church & St. Mary's Roman Catholic Church

ALL SAINTS CHURCH NEWS

A Lenten Love-letter...

Lent is, of course, the 40-day period of preparation for the most holy part of the Christian year - Easter - when we remember the horror of Good Friday and Christ's agonising death on the cross for our sins, and then celebrate his wondrous rising from the dead on Easter Sunday.

Christians have felt it right and proper to prepare themselves for Easter by examining their lives, by putting more effort into their spiritual practices, such as prayer, Bible study, worship, and fasting. It has also been seen as a time to look at how we are living, to assess how well we are doing as followers of Jesus.

There is something particularly appropriate about the timing this year, with Ash Wednesday falling on Valentine's Day. In a sense, Lent is our love-letter to God. Our way of demonstrating to Jesus how much he means to us. How greatly we value his love for us, proved in such a costly way on the cross at Calvary. We should not see our extra efforts in being better and doing better as something negative - a privation, a costly sacrifice - but rather as a way of demonstrating to Jesus our love for Him.

When Jesus was asked which of the 10 Commandments were the most important, he answered; *"You shall love the Lord your God with all your heart, and with all your soul, and with all your mind."* This is the greatest and first commandment.

And a second is like it: *"You shall love your neighbour as yourself."*

On these two commandments hang all the law and the prophets.'

[Matthew 22:37-40, NRSVA]

Love for God is the root of the Christian faith, which then should flow out in love for others. But loving God is what we are made to do. As humans it is our highest goal in life.

And our love for God is but a pale reflection of his immense love for us, demonstrated in Jesus. So, whatever you do this Lent, let it be in the nature of a love-letter to God, more than anything else.

Rev Stephen John MARCH, Pioneer Curate, Hexagon Benefice www.fuelforpilgrims.org

Stephen ✠

ST. MARY'S NEWS

Our services during Lent

Every Wednesday

6.30pm Evensong

7.00pm Mass

Every Thursday

9.30am Stations of the Cross

10.00am Mass

Holy Week and Easter Services

Maundy Thursday

7.30pm Mass of the Lords Supper

Good Friday

3.00pm Liturgy of Good Friday

Holy Saturday

8.00pm Easter Vigil

Easter Sunday (31st March)

10.00am Mass

Father Matthew ✠

FOOD BANK COLLECTION

Friday, March 8th 2.00pm - 4.30 pm in church.

Most needed items:

Coffee, instant mash, UHT milk (whole or semi skimmed), Hot Chocolate

Savoury biscuits/crackers, sponge puddings, pasta sauce, juice, instant custard, noodle snacks, tinned Spagetti, vegetarian tinned meals

Household cleaning items, adult toothpaste and brushes, deodorant and handwash, also dog food...

Please support this worthy cause. Tea/coffee and biscuits for anyone who is dropping off goods or just passing by and would like a chat. Everyone is welcome.

Di Jones 880741

✠CHURCH SERVICES ✠

Hexagon Benefice

March

Sunday 3 rd	10.30am Arnesby
Sunday 10 th	Mothering Sunday 10.30am Mowsley
Sunday 17 th	10.30am Shearsby
Sunday 24 th	Palm Sunday 10.30am B'thorpe
Sunday 31 st	Easter Sunday 10.30am Thedd.

All Saints Church invites you to an informal, warm and friendly mid-week communion every Wednesday 10.00am
Coffee/teas served afterwards

Senior Churchwarden:

Di Jones 880741

Curate:

Stephen March

Stephen.March@LeicesterCofE.org

St Mary's Roman Catholic Church

Mass celebrated every Sunday at 11.00am

Contact:

Robert Constable-Maxwell 880361

Fr. Matthew Pittam 01788 833547

E:matthewpittam@yahoo.co.uk

SWEETENER

We are reviving our popular Pudding Evening of old on Saturday April 27th, at the Village Hall 7.00pm to 9.00pm.

How many puds can you manage?

More information in the Bugle next month.

Proceeds in aid of All Saiints Church funds.

MID-WEEK SERVICE

Our mid-week communion services are thriving... Every Wednesday we have a short half hour service in church at 10.00am, followed by coffee, biscuits and a chat.

We regularly welcome around 20 lovely people each week, but we would welcome anyone who would like to join us, or if you just fancy popping in after the service for a chat!

HAIR BY LYNNDY

Award winning hair stylist & colour specialist



"Now welcoming everybody to my hair studio in Husbands Bosworth for cuts, colours, blow-dries & wedding hair"

Appointment only - 07808 513283

lynndy@hairbylynndy.com

DONALD CAMPBELL LANDSCAPES

All aspects of hard landscaping, including stone walling, pergolas, slabbing and patios.
Husbands Bosworth area
Tel. No. 07817 381 244

FORTHCOMING EVENTS

• Saturday March 2 nd	Friends of Welford Arm work party, 9.30am Welford Wharf
• Saturday, March 2 nd	Scout Hut Book Sale, 10.00am – 1.00pm, Scout Hut, Kilworth Road
• Saturday March 2 nd	Welford Cinema 'My Sailor My Love' (12A), 7.30pm Welford Village Hall
• Tuesday March 5 th	Art Group 10.30am - 12.30pm
• Tuesday March 5 th	Parish Council meeting, 7.30pm Sports Pavilion
• Wednesday March 6 th	Historical Society 'The Great Central Railway Reunification Project', 7.30pm Sports Pavilion
• Friday March 8 th	Food Bank collection, 2.00 - 4.30pm at All Saints Church
• Friday March 8 th	Causeway Coffee Morning, 10.00am - 11.30am Sports Pavilion
• Sunday March 10 th	MOTHERING SUNDAY
• Friday March 15 th	Mobile library
• Tuesday March 19 th	Art Group 10.30am - 12.30pm
• Thursday March 28 th	Village Lunch, 12.30pm Kilworth Springs Golf Club
• Sunday March 31 st	EASTER SUNDAY
• Sunday March 31 st	BRITISH SUMMER TIME BEGINS... [Editor's Note: YAY!!]
• Tuesday April 2 nd	Annual Parish Meeting followed by Parish Council Meeting
• Saturday April 20 th	FOBS Bingo Night
• Saturday April 27 th	Pudding Evening, 7.00pm - 9.00pm Village Hall
• Tuesday April 30 th	Village Lunch
• Saturday May 18 th	FOBS Safari Supper
• Saturday June 6 th	D-Day 80 celebrations
• Wednesday, June 26 th	Historical Society Summer Outing

LOCAL PLANNING NEWS

The following applications have been submitted to Harborough District Council:

■ 24/00081/FUL Single storey front extension, 9 Broad Lane (*withdrawn*)

Recently determined applications:

■ 23/01693/VAC (*Approved*) Erection of two dwellings with associated car parking and landscaping (Var. of 22/00042/FUL) to re-position and changes to car parking, 35 Butt Lane

Current applications may be inspected during normal working hours at the Council Offices, The Symington Building, Adam & Eve Street, Market Harborough or at the Parish Office, 2a Mowsley Road.

Planning applications and other aspects of local government can be viewed on-line at www.harboroughonline.co.uk

GREEN LID GARDEN WASTE COLLECTIONS RECOMMENCE IN BOSWORTH FROM FRIDAY MARCH 1ST

What can I put in my green waste bin?

- Grass, hedge & shrub cuttings
- Leaves and weeds
- Plants and flowers
- Straw, hay and sawdust
- Tree bark, twigs & small branches



Note: Waste from plant-eating pets, such as rabbits, guinea pigs and hamsters can also be put in the green bin.

Please note: If you haven't selected automatic renewals, you need to subscribe to 2023/24 service.

MOBILE LIBRARY

Stops & Times (See dates above)

School, Welford Road: 10.25am - 11.25am

Berridges Lane: 11.30am - 12.10pm

Butt Lane: 12.15pm - 12.50pm

Mobile library Service 0116 305 2695

email: libraries@leics.gov.uk

District of Harborough



*We collect up to 3 large household items or 12 sacks of waste for a charge of £37.16.
Search: Harborough Bulky Waste*

Feb-23

Mo	Tu	We	Th	Fr
		1	2	3
6	7	8	9	10
13	14	15	16	17
20	21	22	23	24
27	28			

'JJ's Kiddycare'



- * **GOOD** * Ofsted grading
- * Government funded sessions available
- * Full Day Care 0-5yrs
- * Situated on a farm site between South Kilworth and Welford
- * Breakfast and After School clubs. (4-14years)
- * Holiday Clubs during all Northants & Leics school breaks

Tel no. 01858 575642

www.jjs-kiddycare.co.uk

Email: admin@jjs-kiddycare.co.uk



- Toe nails cut
 - Corns
 - Verrucas
 - Ingrown toe nails
 - Hard dry skin
 - Fungal nails
 - Hopi candle ear wax removal
 - Holistic therapies
- Home appointments**
07842 266575

www.happyfeetmidlands.com



HAPPY FEET

Registered
Foot Care
Specialist